

THE BRIDGE ACROSS THE
SKY OF DREAMS

BRIGADE
altius
SHOLINGANALLUR



06:00 am

	Cool breeze 10 km/h	After coffee Wispy clouds Evening chatter
↙		

THE ALTIUS LIFE.

43 FLOORS ABOVE CHENNAI'S HIGHEST ASPIRATIONS.

Where the skies are a deeper shade of blue, and where the sea shimmers in the distance, is a lifestyle that raises the standard of fine living in Chennai. Residences that offer true privacy with no common walls, unhindered views and a skybridge that promises experiences that are truly one of a kind.



Artist's Impression.



CHENNAI'S TALLEST RESIDENTIAL SKYBRIDGE.

Up here, it's not just the air that's rarefied. Ethereal views meet magical moments to create truly otherworldly experiences. Just what you'll come to expect from a home with a terrace bridge, surrounded by the seas & the skies.



Creative Visualisation.

LOCATED TO ELEVATE EVERY ASPECT OF LIFE.



NEIGHBOURHOOD

EDUCATIONAL INSTITUTIONS

COLLEGES

- Sathyabama University – 4 KM
- St. Joseph's College of Engineering – 5.5 KM
- Jeppiaar Engineering College – 9 KM

SCHOOLS

- Velammal New Gen School – 1.5 KM
- Narayana E-Techno School – 2 KM
- Orchids The International School – 2 KM
- Gateway International School – 3 KM
- Babaji Vidhyashram – 3.5 KM
- Sishya OMR School – 5 KM
- Hiranandani Upscale School – 9 KM
- American International School – 10 KM

IT/ITES

- Wipro – 1 KM
- Accenture – 1.5 KM
- Cognizant – 3 KM
- Tech Mahindra – 3 KM
- HCL Technologies – 3.5 KM
- Elcot SEZ IT Park – 3.5 KM
- Tata Consultancy Solutions – 6.5 KM
- Chennai One Software Park – 6.5 KM
- Brigade World Trade Center – 9 KM
- SIPCOT IT Park – 10 KM
- RMZ Millenia Business Park – 10 KM

ENTERTAINMENT & LEISURE

- ECR Beach – 4.5 KM
- VGP Universal Kingdom – 5 KM
- BSR Mall – 6.5 KM
- Vivira Mall – 7 KM
- Marina Mall – 8 KM
- Dakshina Chitra – 11 KM
- Phoenix Market City – 14 KM

HOSPITALS

- Chettinad Health City – 1.1 KM
- Swaram Multi-speciality Hospital – 5 KM
- Gleneagles Hospital – 5.5 KM
- VCure Hospital – 8 KM
- Dr. Kamakshi Memorial Hospital – 9 KM
- Apollo Speciality Hospital – 9 KM

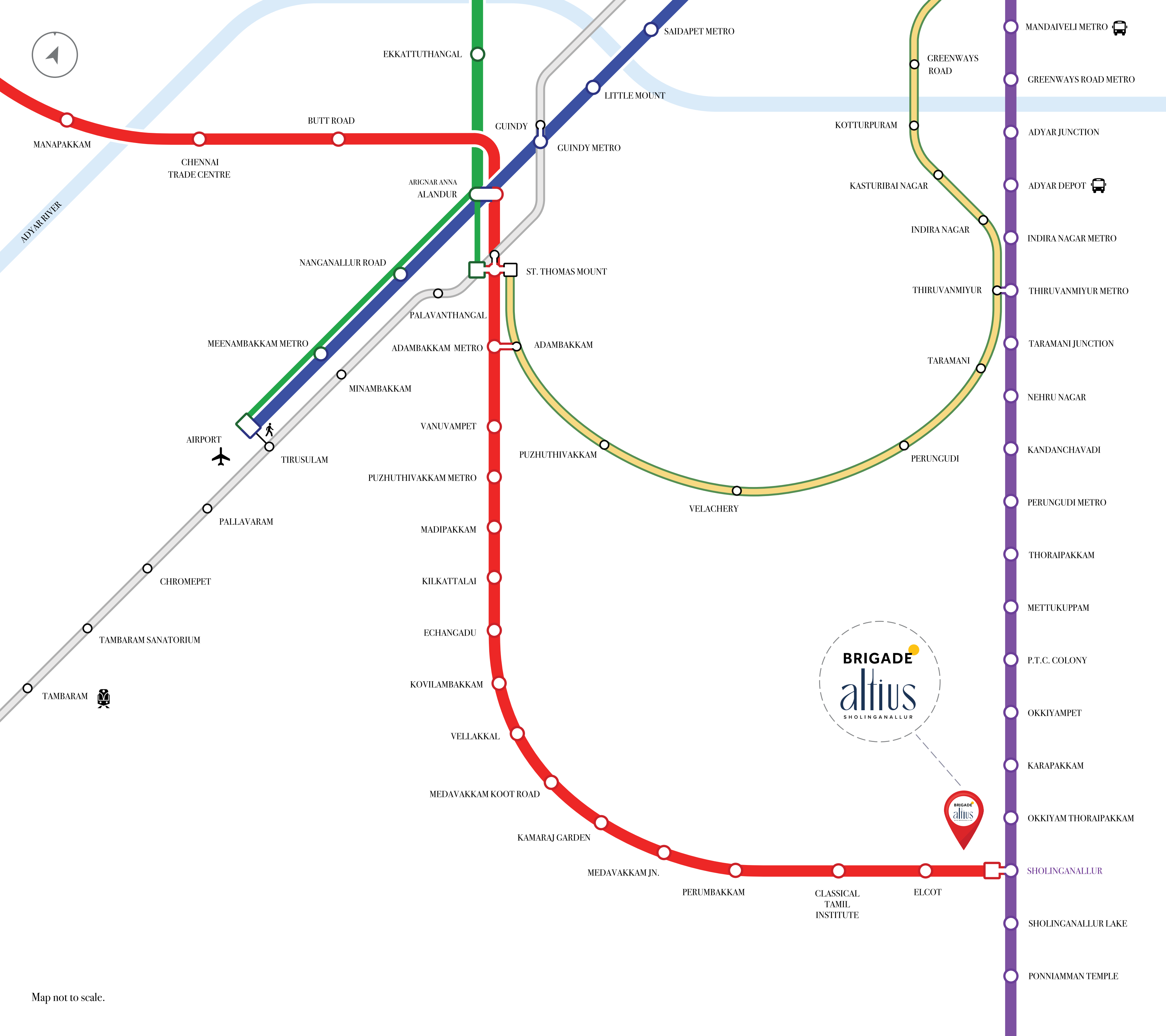
METRO STATION

- Proposed Sholinganallur Metro Station – 50 MTRS

CONNECTIVITY

- ECR Road – 4 KM

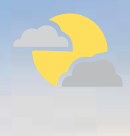
METRO MAP



- BLUE LINE
- GREEN LINE
- PURPLE LINE
- RED LINE
- MASS RAPID TRANSIT SYSTEM (MRTS) LINE
- SUBURBAN RAILWAY LINE
- METRO STATION / TERMINUS
- RAILWAY STATION / TERMINUS
- METRO INTERCHANGE STATION
- — METRO - RAILWAY LINK
- BUS STAND
- LONG-DISTANCE TRAINS
- AIRPORT

Map not to scale.

7:00 pm



Cool breeze
15 km/h

Sunsets,
hues of sky
& mind

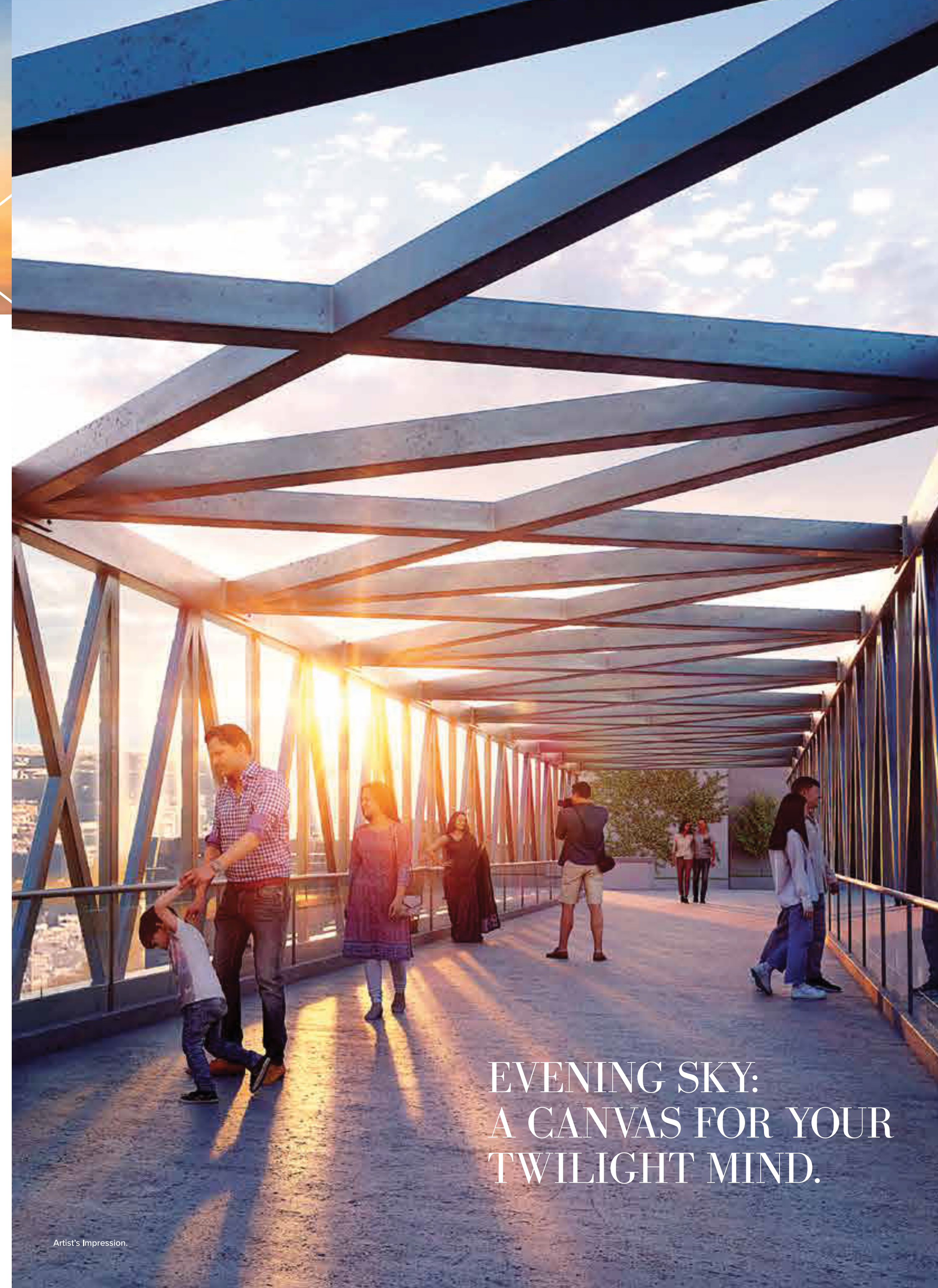


THE BRIDGE BETWEEN
AN EXOTIC EVENING AND
AN INDELIBLE MEMORY.

Twilight flows gloriously into a starry night. And after you've immersed yourself in the moment, perhaps it's time for some rare moments with each other at the expansive and unique podium-level clubhouse. Needless to say, it's the promise of an experience that will linger in your thoughts well beyond the night.



Creative Visualisation.



EVENING SKY:
A CANVAS FOR YOUR
TWILIGHT MIND.

Artist's Impression.



All Images are for representation purpose only.

THE BRIDGE BETWEEN CULTURAL TASTES
AND A SUBLIME STATE OF MIND.

NO COMMON WALLS, TO CONTAIN A WORLD OF LUXURIOUS PRIVACY.



Artist's Impression. Furniture and layout will not be part of the offering.



Artist's Impression. Furniture and layout will not be part of the offering.



Artist's Impression. Furniture and layout will not be part of the offering.



5:00 pm

Cool breeze
10 km/h
A deep
breath of
clear blue sky



A 400 M PATH.
43 FLOORS ABOVE.

Calling it
a walk in the clouds
wouldn't be
an exaggeration.



Images for representation purpose only.

HIGHER THE ASPIRATION,
THE MORE ELEVATED
THE LIFESTYLE.



Artist's Impression.

AMENITIES



ABOVE
THE
ORDINARY
AMENITIES



DAILY
CUP
OF
'AH!'

- Children's Play Area
- Pedestrian Loop
- Futsal
- Multipurpose Court
- Swimming Pool
- Jacuzzi
- Box Cricket



- Outdoor Gym
- Seating Area
- Pet Park
- Drop-off Plaza
- Badminton Court
- Private Garden
- Tot Lot

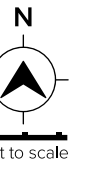


YOUR
WALK
OF
LIFE

PLAYGROUND
FOR
FRIENDS



GROUND FLOOR PLAN



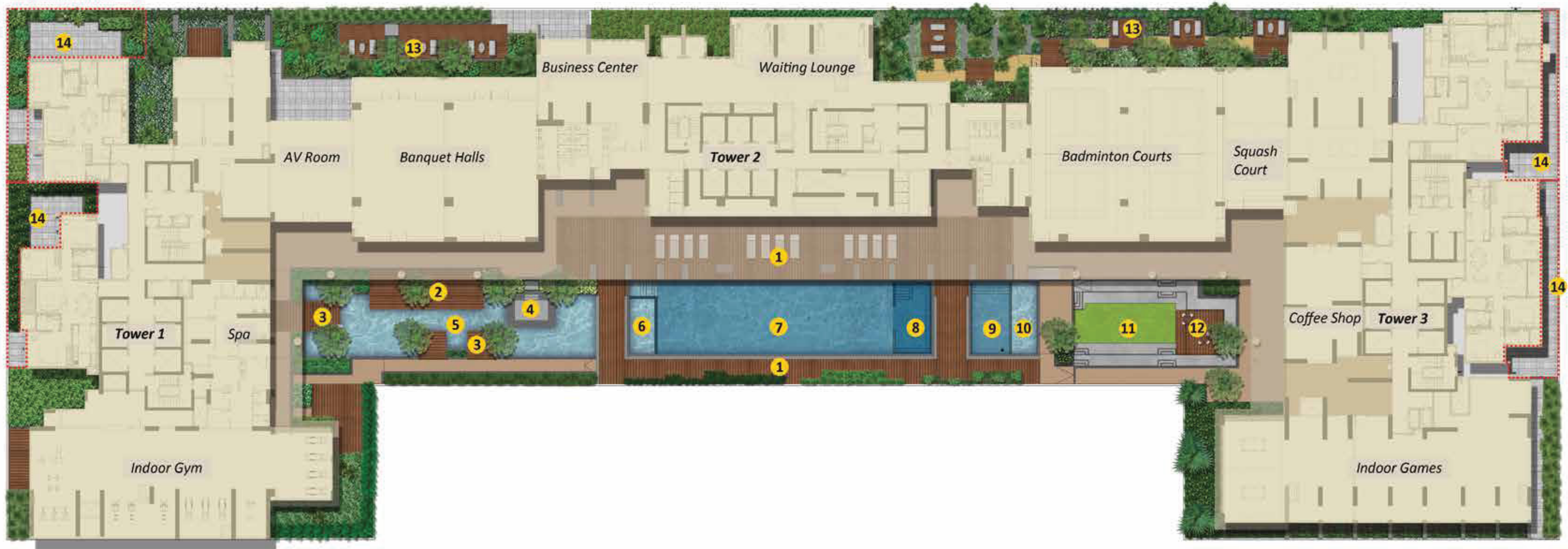
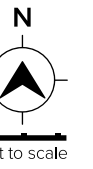
Not to scale



- | | | | |
|----------------------------------|-------------------------|--------------------------|------------------------|
| 1. Grand Arrival | 6. Entry Water Features | 11. Drop-off Plaza | 16. Pet Park |
| 2. Clock Tower | 7. Arrival Lawn | 12. Pedestrian Loop | 17. Futsal |
| 3. Entry Portal & Security Kiosk | 8. Altius Forecourt | 13. Seating Area | 18. Multipurpose Court |
| 4. Grand Drive | 9. Feature Element | 14. Outdoor Gym | 19. Box Cricket |
| 5. Pedestrian Gate | 10. Fire Driveway | 15. Children's Play Area | 20. Service Yards |

The information depicted herein viz., master plans, floor plans, furniture layout, fittings, illustrations, specifications, designs, dimensions, rendered views, colours, amenities and facilities, etc., are subject to change without notifications as may be required by the relevant authorities or the Developer's architect, and cannot form part of an offer or contract. Whilst every care is taken in providing this information, the Developer cannot be held liable for variations. All illustrations and pictures are artist's impression only. The information is subject to variations, additions, deletions, substitutions and modifications as may be recommended by the company's architect and/or the relevant approving authorities. The Developer is wholly exempt from any liability on account of any claim in this regard. (1 square metre = 10.764 square feet). E & OE. All dimensions and calculations are done in metric system (M/Sq.m), and imperial system (Ft/Sq.ft) shown is for reference only. All dimensions indicated in the drawing are from unfinished surfaces, excluding plaster thickness and tile thickness.

FOURTH FLOOR PLAN



- | | |
|--------------------------------|-----------------------------|
| 1. Pool Deck | 8. Jacuzzi |
| 2. Banquet Hall Spill-out Area | 9. Kid's Pool |
| 3. Water Court Platforms | 10. Water Feature |
| 4. Sunken Seating | 11. Sunken Court |
| 5. Reflective Water Pool | 12. Coffee Shop |
| 6. Shallow Pool | 13. Peripheral Seating Area |
| 7. Swimming Pool | 14. Private Gardens |

The information depicted herein viz., master plans, floor plans, furniture layout, fittings, illustrations, specifications, designs, dimensions, rendered views, colours, amenities and facilities, etc., are subject to change without notifications as may be required by the relevant authorities or the Developer's architect, and cannot form part of an offer or contract. Whilst every care is taken in providing this information, the Developer cannot be held liable for variations. All illustrations and pictures are artist's impression only. The information is subject to variations, additions, deletions, substitutions and modifications as may be recommended by the company's architect and/or the relevant approving authorities. The Developer is wholly exempt from any liability on account of any claim in this regard. (1 square metre = 10.764 square feet). E & OE. All dimensions and calculations are done in metric system (M/Sq.m), and imperial system (Ft/Sq.ft) shown is for reference only. All dimensions indicated in the drawing are from unfinished surfaces, excluding plaster thickness and tile thickness.

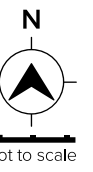
SIXTH FLOOR PLAN



1. Tot Lot
2. Senior Citizens' Lawn
3. Seating Area
4. Private Gardens
5. Badminton Courts
(as per the architects)

The information depicted herein viz., master plans, floor plans, furniture layout, fittings, illustrations, specifications, designs, dimensions, rendered views, colours, amenities and facilities, etc., are subject to change without notifications as may be required by the relevant authorities or the Developer's architect, and cannot form part of an offer or contract. Whilst every care is taken in providing this information, the Developer cannot be held liable for variations. All illustrations and pictures are artist's impression only. The information is subject to variations, additions, deletions, substitutions and modifications as may be recommended by the company's architect and/or the relevant approving authorities. The Developer is wholly exempt from any liability on account of any claim in this regard. (1 square metre = 10.764 square feet). E & OE. All dimensions and calculations are done in metric system (M/Sq.m), and imperial system (Ft/Sq.ft) shown is for reference only. All dimensions indicated in the drawing are from unfinished surfaces, excluding plaster thickness and tile thickness.

TERRACE FLOOR PLAN

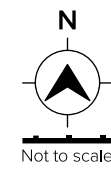


- 1. Tot Lot
- 2. Outdoor Gym
- 3. Yoga Deck
- 4. Seating Decks
- 5. Skybridge
- 6. Party Area
- 7. Lounge Area
- 8. Sea View Terraces
- 9. Solar Panels on Terrace

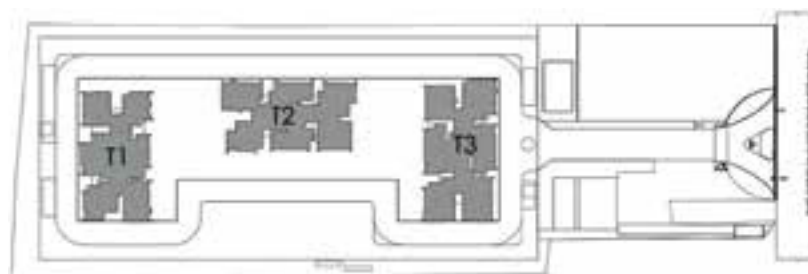
The information depicted herein viz., master plans, floor plans, furniture layout, fittings, illustrations, specifications, designs, dimensions, rendered views, colours, amenities and facilities, etc., are subject to change without notifications as may be required by the relevant authorities or the Developer's architect, and cannot form part of an offer or contract. Whilst every care is taken in providing this information, the Developer cannot be held liable for variations. All illustrations and pictures are artist's impression only. The information is subject to variations, additions, deletions, substitutions and modifications as may be recommended by the company's architect and/or the relevant approving authorities. The Developer is wholly exempt from any liability on account of any claim in this regard. (1 square metre = 10.764 square feet). E & OE. All dimensions and calculations are done in metric system (M/Sq.m), and imperial system (Ft/Sq.ft) shown is for reference only. All dimensions indicated in the drawing are from unfinished surfaces, excluding plaster thickness and tile thickness.

TYPICAL FLOOR PLAN

TOWER - 1



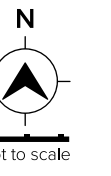
Key Plan



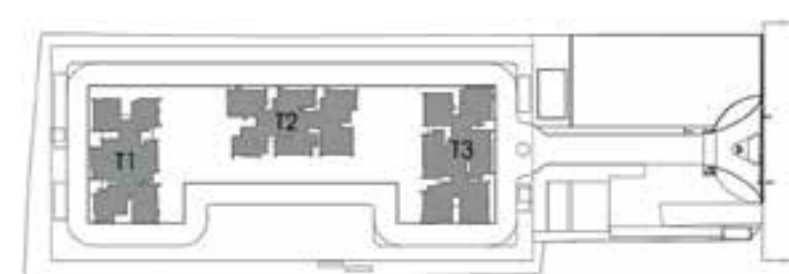
The information depicted herein viz., master plans, floor plans, furniture layout, fittings, illustrations, specifications, designs, dimensions, rendered views, colours, amenities and facilities, etc., are subject to change without notifications as may be required by the relevant authorities or the Developer's architect, and cannot form part of an offer or contract. Whilst every care is taken in providing this information, the Developer cannot be held liable for variations. All illustrations and pictures are artist's impression only. The information is subject to variations, additions, deletions, substitutions and modifications as may be recommended by the company's architect and/or the relevant approving authorities. The Developer is wholly exempt from any liability on account of any claim in this regard. (1 square metre = 10.764 square feet). E & OE. All dimensions and calculations are done in metric system (M/Sq.m), and imperial system (Ft/Sq.ft) shown is for reference only. All dimensions indicated in the drawing are from unfinished surfaces, excluding plaster thickness and tile thickness.

TYPICAL FLOOR PLAN

TOWER - 2



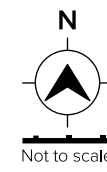
Key Plan



The information depicted herein viz., master plans, floor plans, furniture layout, fittings, illustrations, specifications, designs, dimensions, rendered views, colours, amenities and facilities, etc., are subject to change without notifications as may be required by the relevant authorities or the Developer's architect, and cannot form part of an offer or contract. Whilst every care is taken in providing this information, the Developer cannot be held liable for variations. All illustrations and pictures are artist's impression only. The information is subject to variations, additions, deletions, substitutions and modifications as may be recommended by the company's architect and/or the relevant approving authorities. The Developer is wholly exempt from any liability on account of any claim in this regard. (1 square metre = 10.764 square feet). E & OE. All dimensions and calculations are done in metric system (M/Sq.m), and imperial system (Ft/Sq.ft) shown is for reference only. All dimensions indicated in the drawing are from unfinished surfaces, excluding plaster thickness and tile thickness.

TYPICAL FLOOR PLAN

TOWER - 3



UNIT PLAN - 01

3 BHK + MAID'S ROOM

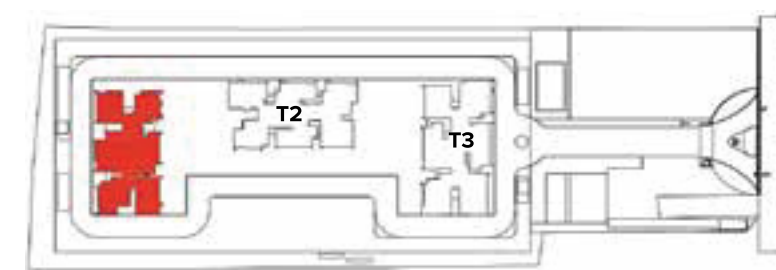


Key Plan



The information depicted herein viz., master plans, floor plans, furniture layout, fittings, illustrations, specifications, designs, dimensions, rendered views, colours, amenities and facilities, etc., are subject to change without notifications as may be required by the relevant authorities or the Developer's architect, and cannot form part of an offer or contract. Whilst every care is taken in providing this information, the Developer cannot be held liable for variations. All illustrations and pictures are artist's impression only. The information is subject to variations, additions, deletions, substitutions and modifications as may be recommended by the company's architect and/or the relevant approving authorities. The Developer is wholly exempt from any liability on account of any claim in this regard. (1 square metre = 10.764 square feet). E & OE. All dimensions and calculations are done in metric system (M/Sq.m), and imperial system (Ft/Sq.ft) shown is for reference only. All dimensions indicated in the drawing are from unfinished surfaces, excluding plaster thickness and tile thickness.

Key Plan



The information depicted herein viz., master plans, floor plans, furniture layout, fittings, illustrations, specifications, designs, dimensions, rendered views, colours, amenities and facilities, etc., are subject to change without notifications as may be required by the relevant authorities or the Developer's architect, and cannot form part of an offer or contract. Whilst every care is taken in providing this information, the Developer cannot be held liable for variations. All illustrations and pictures are artist's impression only. The information is subject to variations, additions, deletions, substitutions and modifications as may be recommended by the company's architect and/or the relevant approving authorities. The Developer is wholly exempt from any liability on account of any claim in this regard. (1 square metre = 10.764 square feet). E & OE. All dimensions and calculations are done in metric system (M/Sq.m), and imperial system (Ft/Sq.ft) shown is for reference only. All dimensions indicated in the drawing are from unfinished surfaces, excluding plaster thickness and tile thickness.

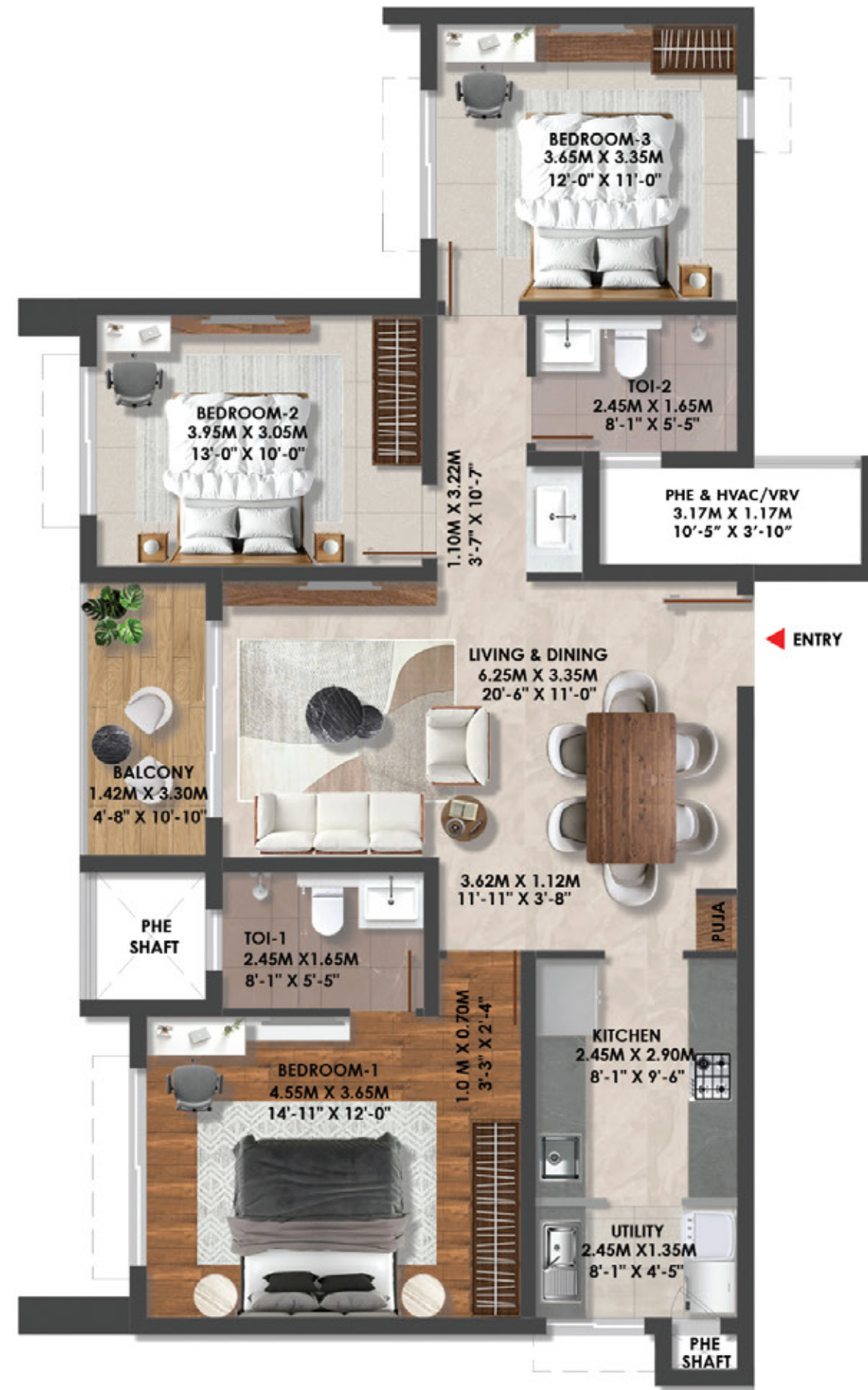
Block Plan



Super Built-up Area	2208 sq.ft.
Unit Carpet Area	1332 sq.ft.
Balcony + VRV Platform	83 sq.ft.

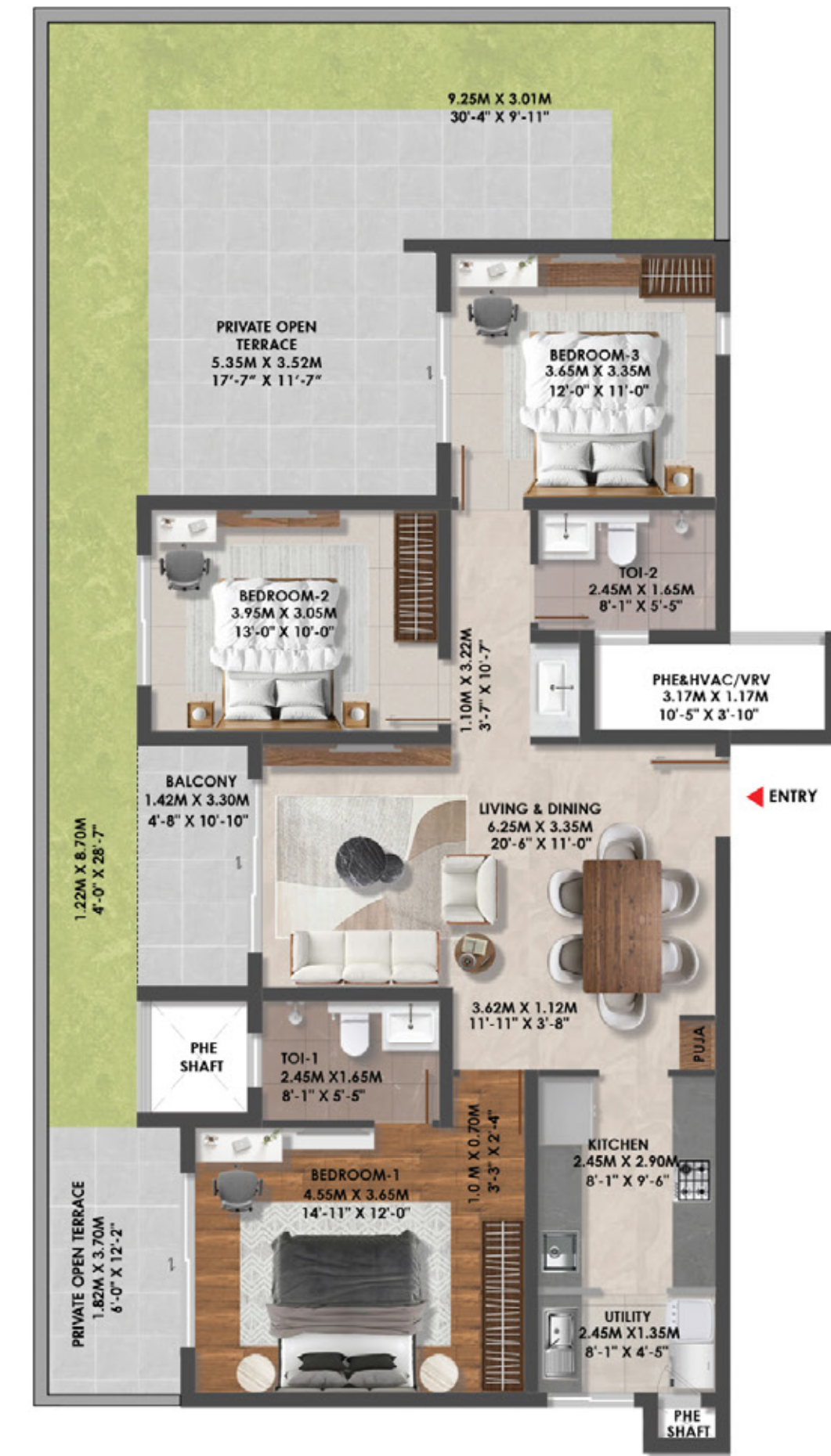
UNIT PLAN - 02

3 BHK + 2 TOILETS

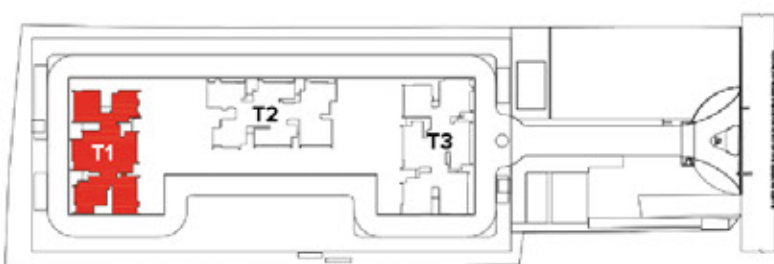


UNIT PLAN - 02

3 BHK + 2 TOILETS + OPEN TERRACE



Key Plan



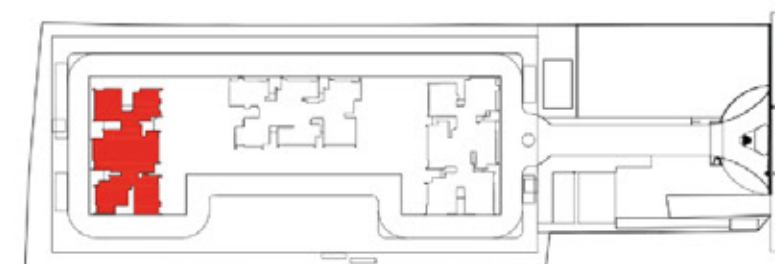
Block Plan



Super Built-up Area	1726 sq.ft.
Unit Carpet Area	1010 sq.ft.
Balcony + VRV Platform	91 sq.ft.

The information depicted herein viz., master plans, floor plans, furniture layout, fittings, illustrations, specifications, designs, dimensions, rendered views, colours, amenities and facilities, etc., are subject to change without notifications as may be required by the relevant authorities or the Developer's architect, and cannot form part of an offer or contract. Whilst every care is taken in providing this information, the Developer cannot be held liable for variations. All illustrations and pictures are artist's impression only. The information is subject to variations, additions, deletions, substitutions and modifications as may be recommended by the company's architect and/or the relevant approving authorities. The Developer is wholly exempt from any liability on account of any claim in this regard. (1 square metre = 10.764 square feet), E & OE. All dimensions and calculations are done in metric system (M/Sq.m), and Imperial system (Ft/Sq.ft) shown is for reference only. All dimensions indicated in the drawing are from unfinished surfaces, excluding plaster thickness and tile thickness.

Key Plan



Block Plan

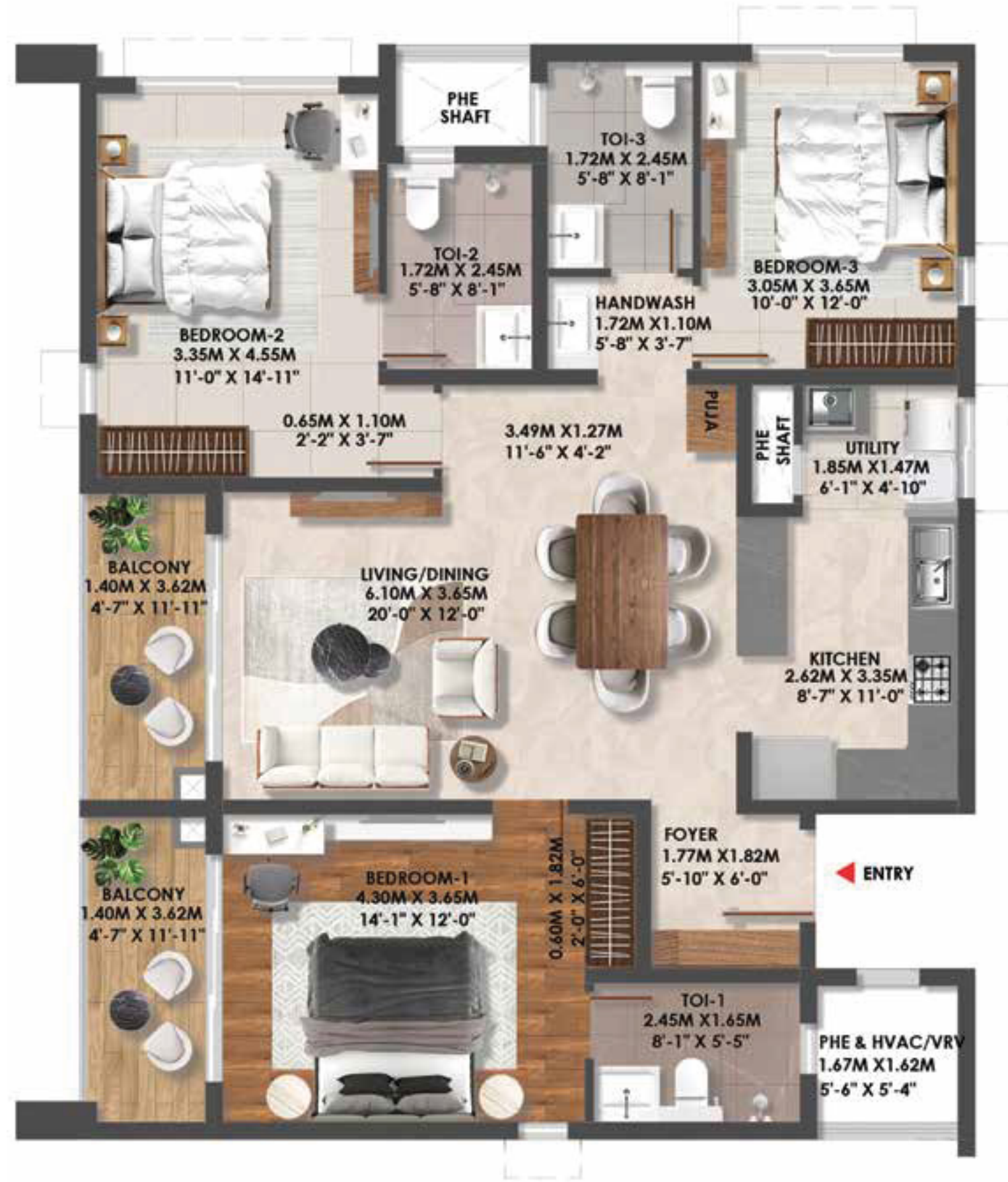
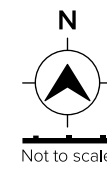


Super Built-up Area	1726 sq.ft.
Unit Carpet Area	1010 sq.ft.
Balcony + VRV Platform	91 sq.ft.
Private Open Terrace Carpet Area	762 sq.ft.

The information depicted herein viz., master plans, floor plans, furniture layout, fittings, illustrations, specifications, designs, dimensions, rendered views, colours, amenities and facilities, etc., are subject to change without notifications as may be required by the relevant authorities or the Developer's architect, and cannot form part of an offer or contract. Whilst every care is taken in providing this information, the Developer cannot be held liable for variations. All illustrations and pictures are artist's impression only. The information is subject to variations, additions, deletions, substitutions and modifications as may be recommended by the company's architect and/or the relevant approving authorities. The Developer is wholly exempt from any liability on account of any claim in this regard. (1 square metre = 10.764 square feet), E & OE. All dimensions and calculations are done in metric system (M/Sq.m), and Imperial system (Ft/Sq.ft) shown is for reference only. All dimensions indicated in the drawing are from unfinished surfaces, excluding plaster thickness and tile thickness.

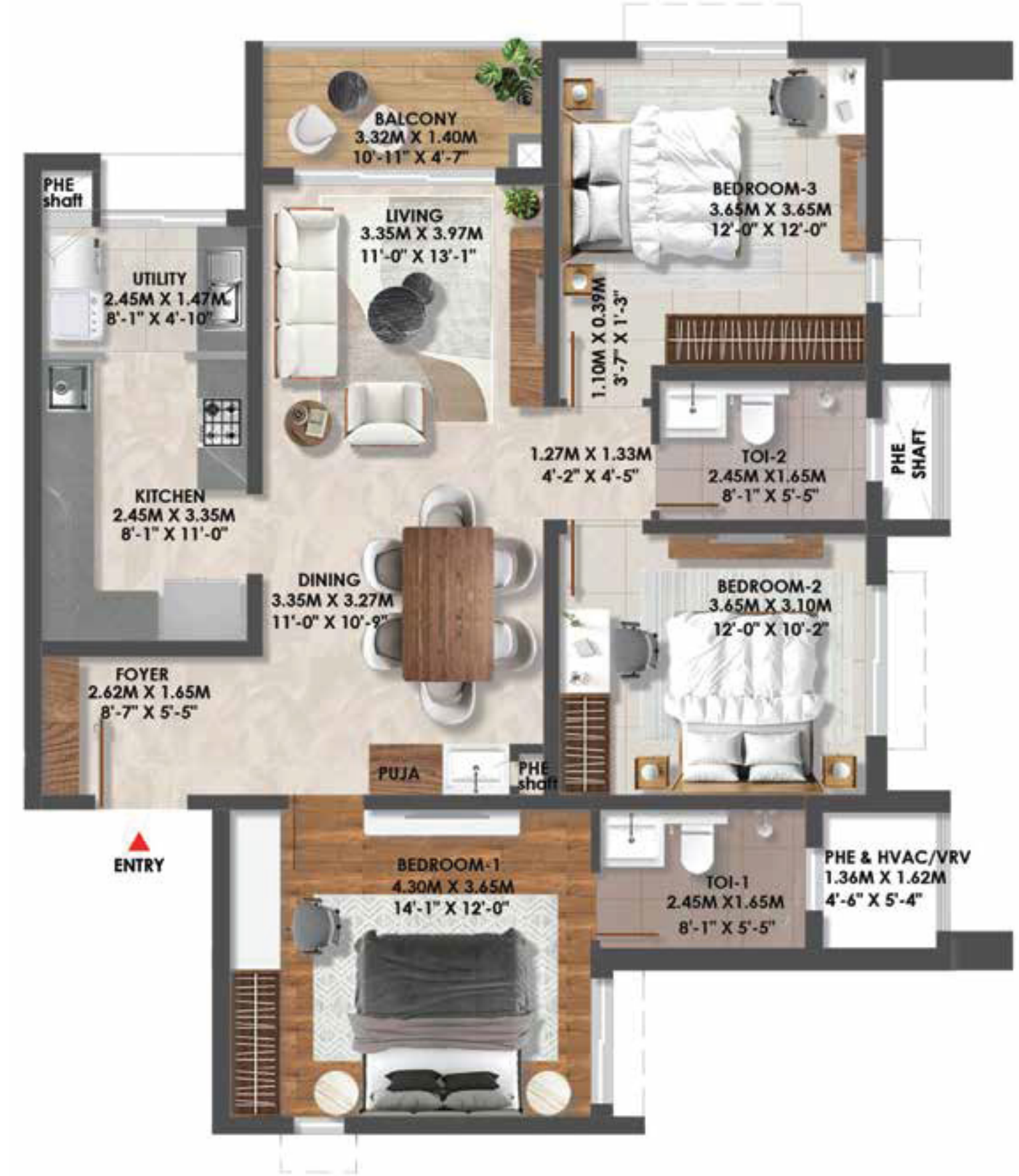
UNIT PLAN - 03

3 BHK + 3 TOILETS

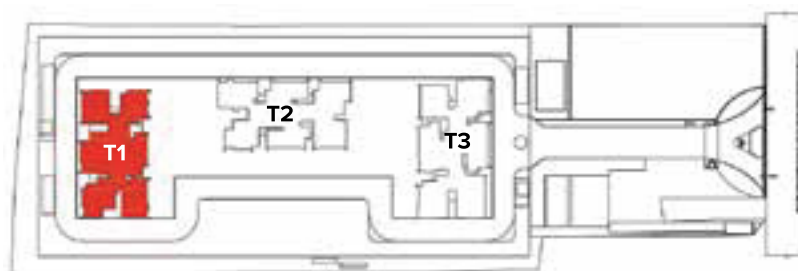


UNIT PLAN - 04

3 BHK + 2 TOILETS



Key Plan



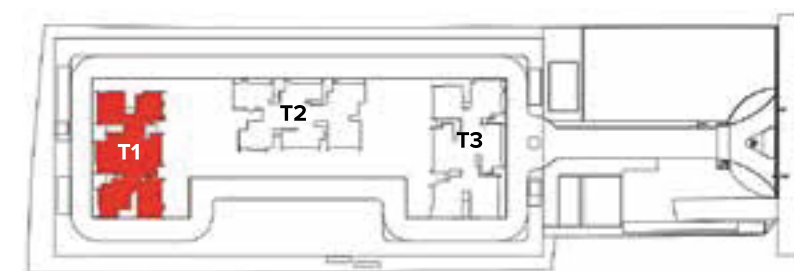
Block Plan



Super Built-up Area	1966 sq.ft.
Unit Carpet Area	1136 sq.ft.
Balcony + VRV Platform	131 sq.ft.

The information depicted herein viz., master plans, floor plans, furniture layout, fittings, illustrations, specifications, designs, dimensions, rendered views, colours, amenities and facilities, etc., are subject to change without notifications as may be required by the relevant authorities or the Developer's architect, and cannot form part of an offer or contract. Whilst every care is taken in providing this information, the Developer cannot be held liable for variations. All illustrations and pictures are artist's impression only. The information is subject to variations, additions, deletions, substitutions and modifications as may be recommended by the company's architect and/or the relevant approving authorities. The Developer is wholly exempt from any liability on account of any claim in this regard. (1 square metre = 10.764 square feet). E & OE. All dimensions and calculations are done in metric system (M/Sq.m), and imperial system (Ft/Sq.ft) shown is for reference only. All dimensions indicated in the drawing are from unfinished surfaces, excluding plaster thickness and tile thickness.

Key Plan



Block Plan

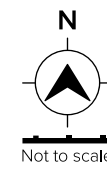


Super Built-up Area	1740 sq.ft.
Unit Carpet Area	1035 sq.ft.
Balcony + VRV Platform	74 sq.ft.

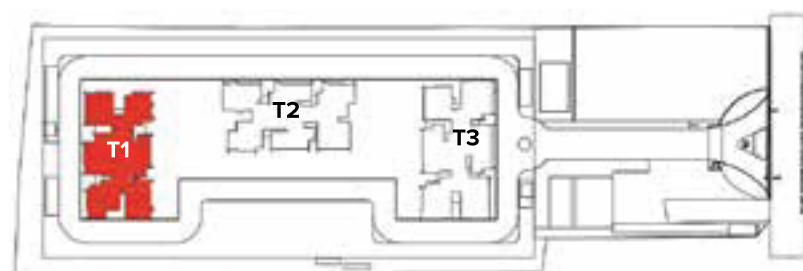
The information depicted herein viz., master plans, floor plans, furniture layout, fittings, illustrations, specifications, designs, dimensions, rendered views, colours, amenities and facilities, etc., are subject to change without notifications as may be required by the relevant authorities or the Developer's architect, and cannot form part of an offer or contract. Whilst every care is taken in providing this information, the Developer cannot be held liable for variations. All illustrations and pictures are artist's impression only. The information is subject to variations, additions, deletions, substitutions and modifications as may be recommended by the company's architect and/or the relevant approving authorities. The Developer is wholly exempt from any liability on account of any claim in this regard. (1 square metre = 10.764 square feet). E & OE. All dimensions and calculations are done in metric system (M/Sq.m), and imperial system (Ft/Sq.ft) shown is for reference only. All dimensions indicated in the drawing are from unfinished surfaces, excluding plaster thickness and tile thickness.

UNIT PLAN - 05

3 BHK + 2 TOILETS



Key Plan



Block Plan

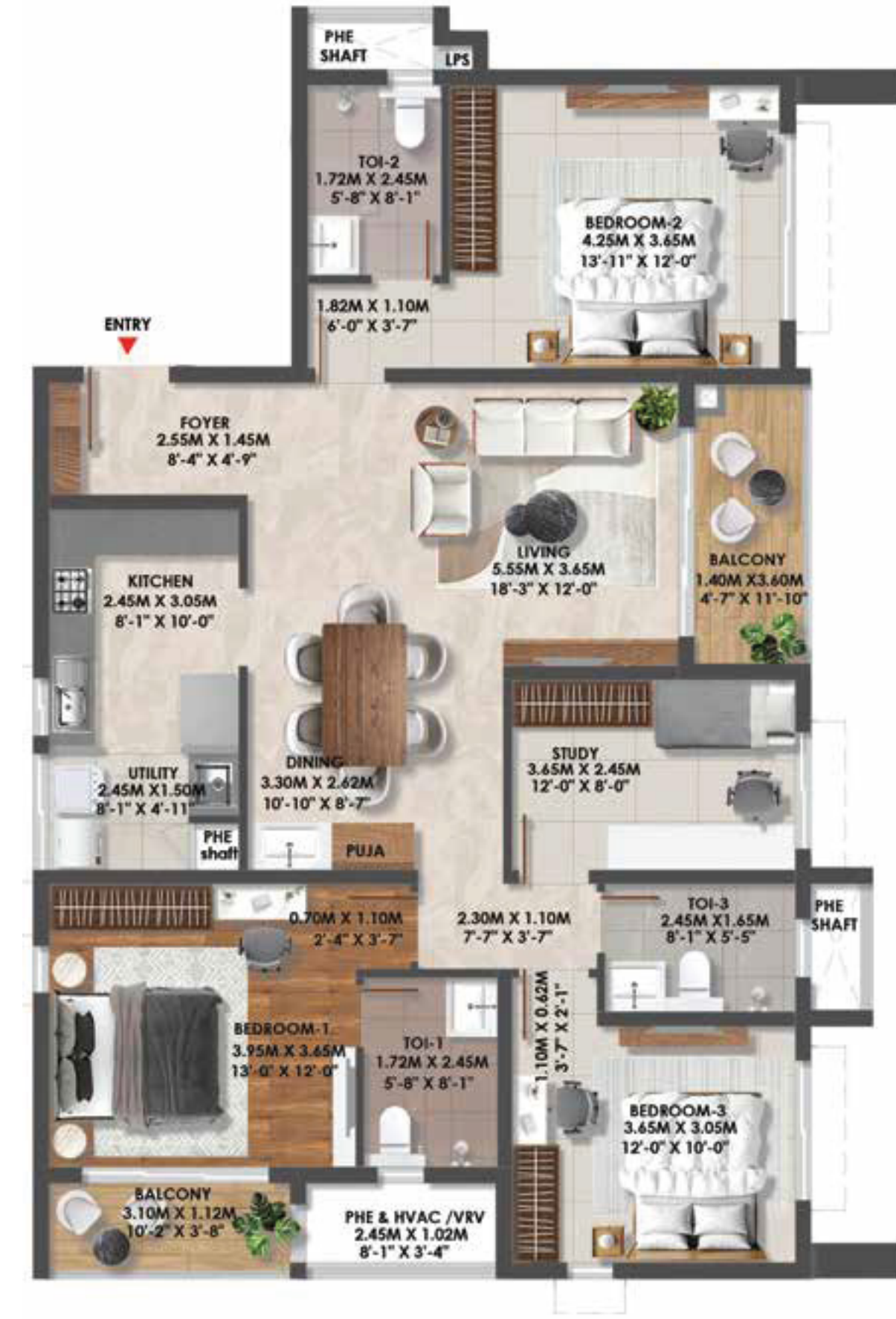


Super Built-up Area	1755 sq.ft.
Unit Carpet Area	1061 sq.ft.
Balcony + VRV Platform	65 sq.ft.

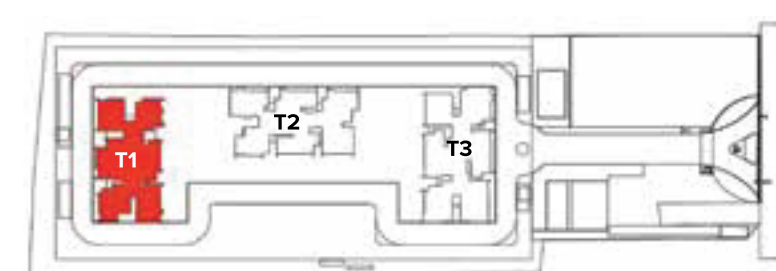
The information depicted herein viz., master plans, floor plans, furniture layout, fittings, illustrations, specifications, designs, dimensions, rendered views, colours, amenities and facilities, etc., are subject to change without notifications as may be required by the relevant authorities or the Developer's architect, and cannot form part of an offer or contract. Whilst every care is taken in providing this information, the Developer cannot be held liable for variations. All illustrations and pictures are artist's impression only. The information is subject to variations, additions, deletions, substitutions and modifications as may be recommended by the company's architect and/or the relevant approving authorities. The Developer is wholly exempt from any liability on account of any claim in this regard. (1 square metre = 10.764 square feet). E & OE. All dimensions and calculations are done in metric system (M/Sq.m), and imperial system (Ft/Sq.ft) shown is for reference only. All dimensions indicated in the drawing are from unfinished surfaces, excluding plaster thickness and tile thickness.

UNIT PLAN - 06

3 BHK + 3 TOILETS + STUDY



Key Plan



Block Plan

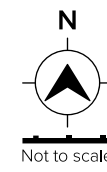


Super Built-up Area	2168 sq.ft.
Unit Carpet Area	1274 sq.ft.
Balcony + VRV Platform	119 sq.ft.

The information depicted herein viz., master plans, floor plans, furniture layout, fittings, illustrations, specifications, designs, dimensions, rendered views, colours, amenities and facilities, etc., are subject to change without notifications as may be required by the relevant authorities or the Developer's architect, and cannot form part of an offer or contract. Whilst every care is taken in providing this information, the Developer cannot be held liable for variations. All illustrations and pictures are artist's impression only. The information is subject to variations, additions, deletions, substitutions and modifications as may be recommended by the company's architect and/or the relevant approving authorities. The Developer is wholly exempt from any liability on account of any claim in this regard. (1 square metre = 10.764 square feet). E & OE. All dimensions and calculations are done in metric system (M/Sq.m), and imperial system (Ft/Sq.ft) shown is for reference only. All dimensions indicated in the drawing are from unfinished surfaces, excluding plaster thickness and tile thickness.

UNIT PLAN - 07

3 BHK + 3 TOILETS + STUDY



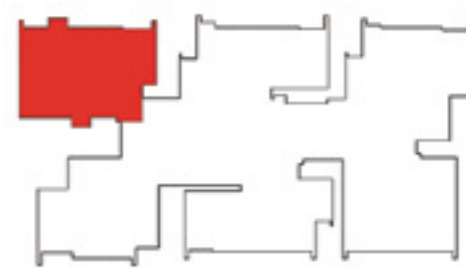
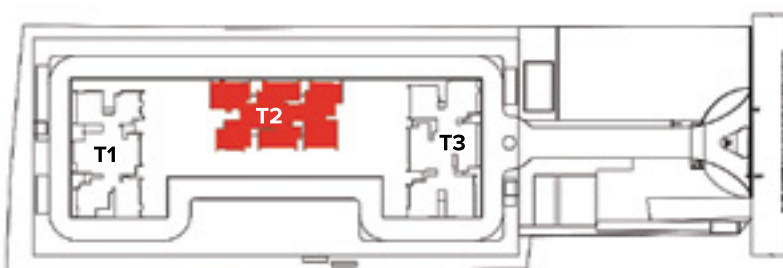
UNIT PLAN - 08

3 BHK + 3 TOILETS



Key Plan

Block Plan

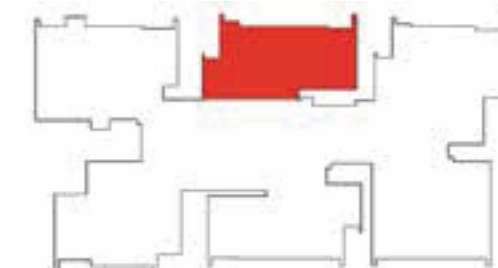


Super Built-up Area	2250 sq.ft.
Unit Carpet Area	1317 sq.ft.
Balcony + VRV Platform	125 sq.ft.

The information depicted herein viz., master plans, floor plans, furniture layout, fittings, illustrations, specifications, designs, dimensions, rendered views, colours, amenities and facilities, etc., are subject to change without notifications as may be required by the relevant authorities or the Developer's architect, and cannot form part of an offer or contract. Whilst every care is taken in providing this information, the Developer cannot be held liable for variations. All illustrations and pictures are artist's impression only. The information is subject to variations, additions, deletions, substitutions and modifications as may be recommended by the company's architect and/or the relevant approving authorities. The Developer is wholly exempt from any liability on account of any claim in this regard. (1 square metre = 10.764 square feet). E & OE. All dimensions and calculations are done in metric system (M/Sq.m), and imperial system (Ft/Sq.ft) shown is for reference only. All dimensions indicated in the drawing are from unfinished surfaces, excluding plaster thickness and tile thickness.

Key Plan

Block Plan

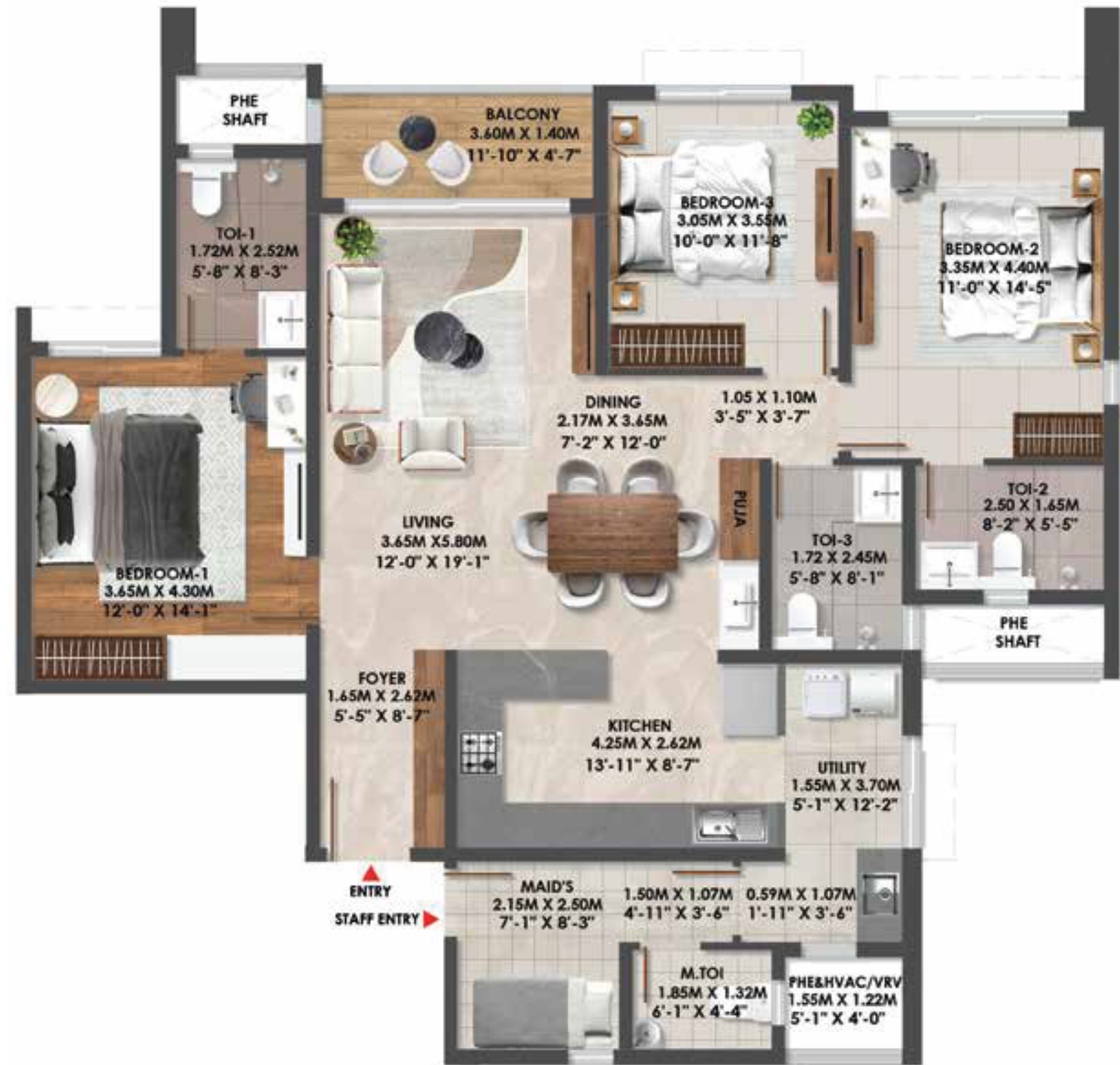
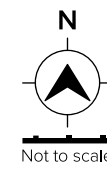


Super Built-up Area	1886 sq.ft.
Unit Carpet Area	1135 sq.ft.
Balcony + VRV Platform	66 sq.ft.

The information depicted herein viz., master plans, floor plans, furniture layout, fittings, illustrations, specifications, designs, dimensions, rendered views, colours, amenities and facilities, etc., are subject to change without notifications as may be required by the relevant authorities or the Developer's architect, and cannot form part of an offer or contract. Whilst every care is taken in providing this information, the Developer cannot be held liable for variations. All illustrations and pictures are artist's impression only. The information is subject to variations, additions, deletions, substitutions and modifications as may be recommended by the company's architect and/or the relevant approving authorities. The Developer is wholly exempt from any liability on account of any claim in this regard. (1 square metre = 10.764 square feet). E & OE. All dimensions and calculations are done in metric system (M/Sq.m), and imperial system (Ft/Sq.ft) shown is for reference only. All dimensions indicated in the drawing are from unfinished surfaces, excluding plaster thickness and tile thickness.

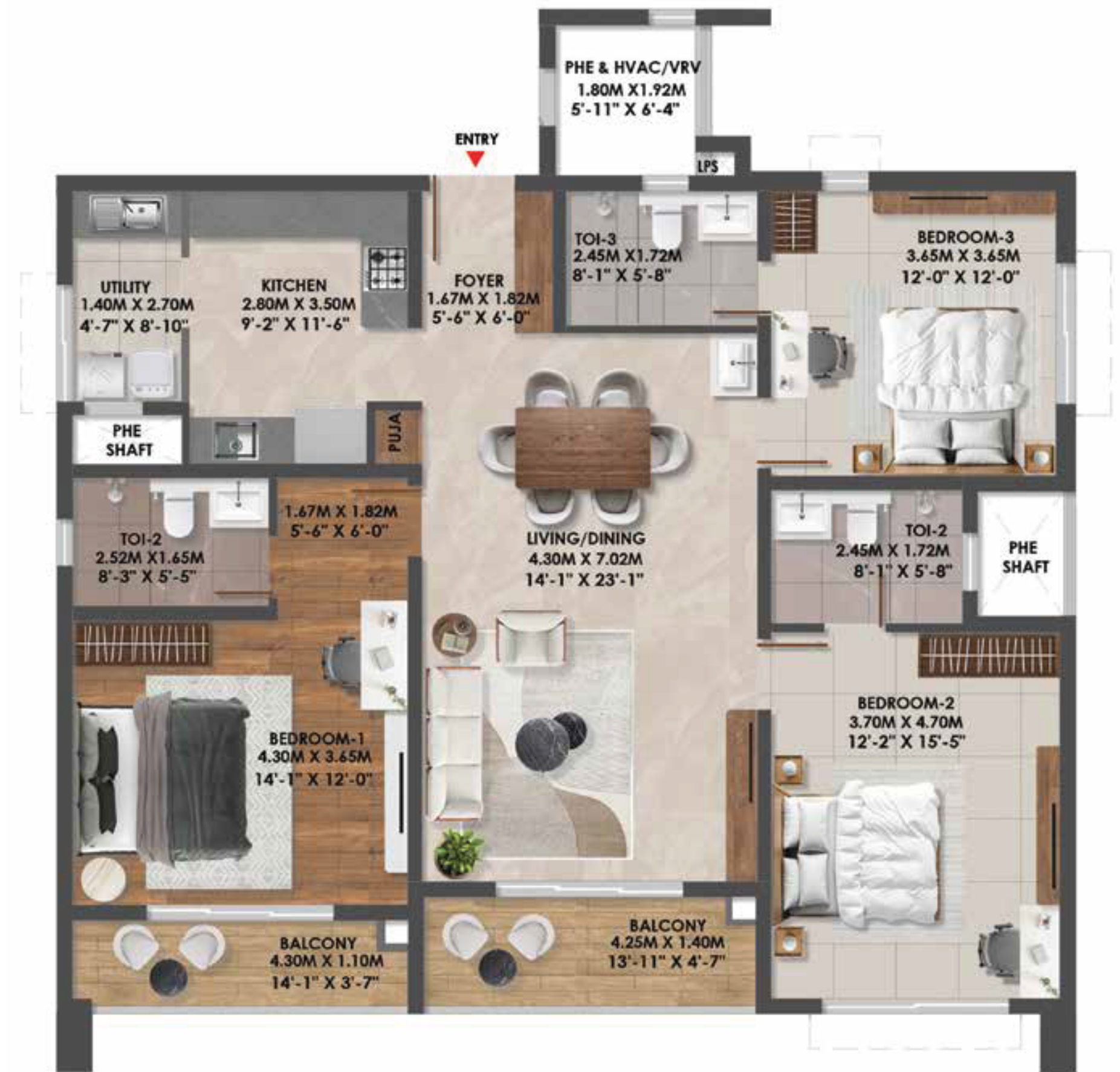
UNIT PLAN - 09

3 BHK + 3 TOILETS + MAID'S ROOM

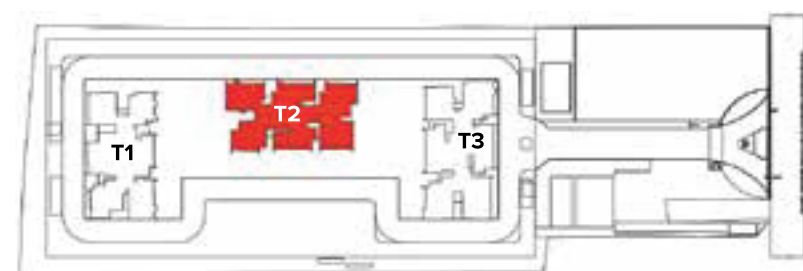


UNIT PLAN - 10

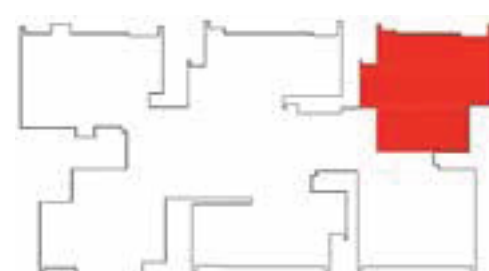
3 BHK + 3 TOILETS



Key Plan



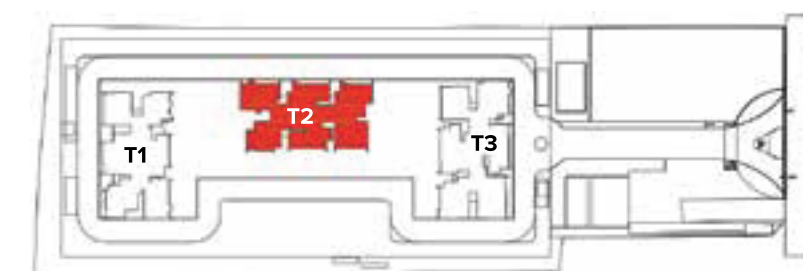
Block Plan



Super Built-up Area	2146 sq.ft.
Unit Carpet Area	1310 sq.ft.
Balcony + VRV Platform	75 sq.ft.

The information depicted herein viz., master plans, floor plans, furniture layout, fittings, illustrations, specifications, designs, dimensions, rendered views, colours, amenities and facilities, etc., are subject to change without notifications as may be required by the relevant authorities or the Developer's architect, and cannot form part of an offer or contract. Whilst every care is taken in providing this information, the Developer cannot be held liable for variations. All illustrations and pictures are artist's impression only. The information is subject to variations, additions, deletions, substitutions and modifications as may be recommended by the company's architect and/or the relevant approving authorities. The Developer is wholly exempt from any liability on account of any claim in this regard. (1 square metre = 10.764 square feet). E & OE. All dimensions and calculations are done in metric system (M/Sq.m), and imperial system (Ft/Sq.ft) shown is for reference only. All dimensions indicated in the drawing are from unfinished surfaces, excluding plaster thickness and tile thickness.

Key Plan



Block Plan

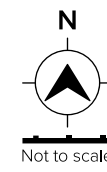


Super Built-up Area	2133 sq.ft.
Unit Carpet Area	1234 sq.ft.
Balcony + VRV Platform	129 sq.ft.

The information depicted herein viz., master plans, floor plans, furniture layout, fittings, illustrations, specifications, designs, dimensions, rendered views, colours, amenities and facilities, etc., are subject to change without notifications as may be required by the relevant authorities or the Developer's architect, and cannot form part of an offer or contract. Whilst every care is taken in providing this information, the Developer cannot be held liable for variations. All illustrations and pictures are artist's impression only. The information is subject to variations, additions, deletions, substitutions and modifications as may be recommended by the company's architect and/or the relevant approving authorities. The Developer is wholly exempt from any liability on account of any claim in this regard. (1 square metre = 10.764 square feet). E & OE. All dimensions and calculations are done in metric system (M/Sq.m), and imperial system (Ft/Sq.ft) shown is for reference only. All dimensions indicated in the drawing are from unfinished surfaces, excluding plaster thickness and tile thickness.

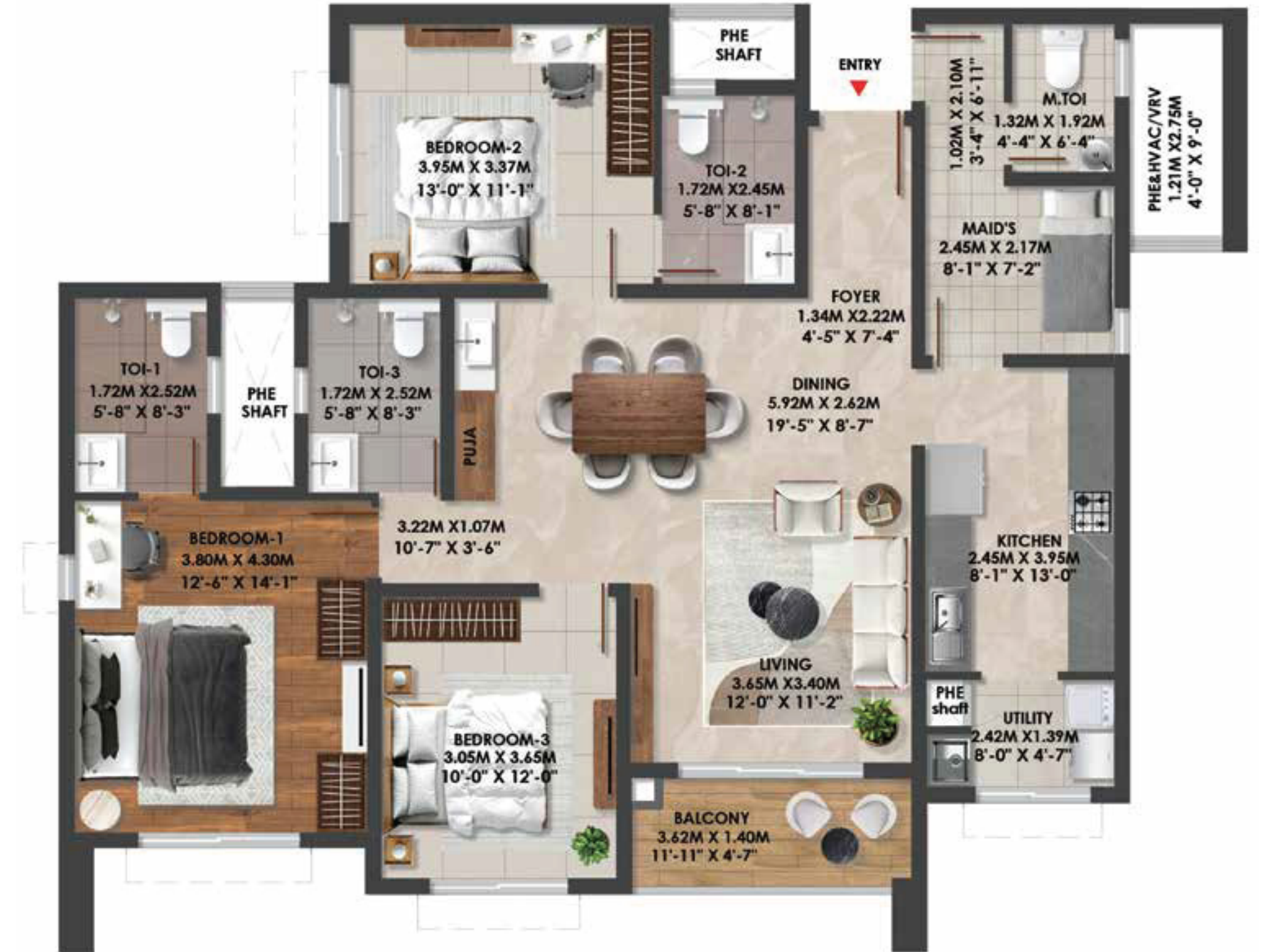
UNIT PLAN - 11

3 BHK + 3 TOILETS

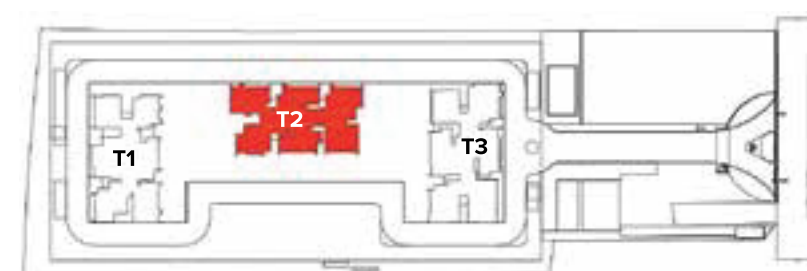


UNIT PLAN - 12

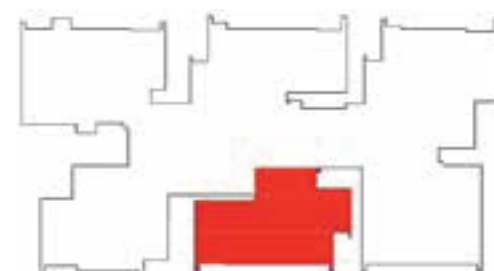
3 BHK + 3 TOILETS + MAID'S ROOM



Key Plan



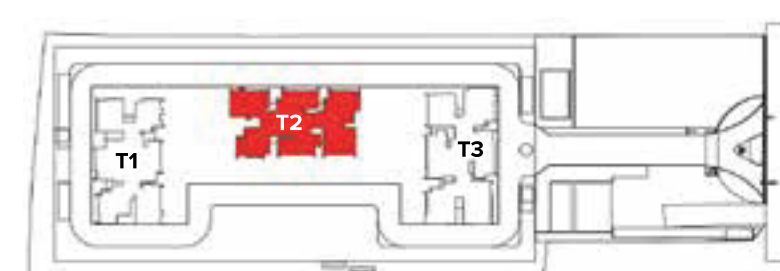
Block Plan



Super Built-up Area	1857 sq.ft.
Unit Carpet Area	1126 sq.ft.
Balcony + VRV Platform	57 sq.ft.

The information depicted herein viz., master plans, floor plans, furniture layout, fittings, illustrations, specifications, designs, dimensions, rendered views, colours, amenities and facilities, etc., are subject to change without notifications as may be required by the relevant authorities or the Developer's architect, and cannot form part of an offer or contract. Whilst every care is taken in providing this information, the Developer cannot be held liable for variations. All illustrations and pictures are artist's impression only. The information is subject to variations, additions, deletions, substitutions and modifications as may be recommended by the company's architect and/or the relevant approving authorities. The Developer is wholly exempt from any liability on account of any claim in this regard. (1 square metre = 10.764 square feet). E & OE. All dimensions and calculations are done in metric system (M/Sq.m), and imperial system (Ft/Sq.ft) shown is for reference only. All dimensions indicated in the drawing are from unfinished surfaces, excluding plaster thickness and tile thickness.

Key Plan



Block Plan

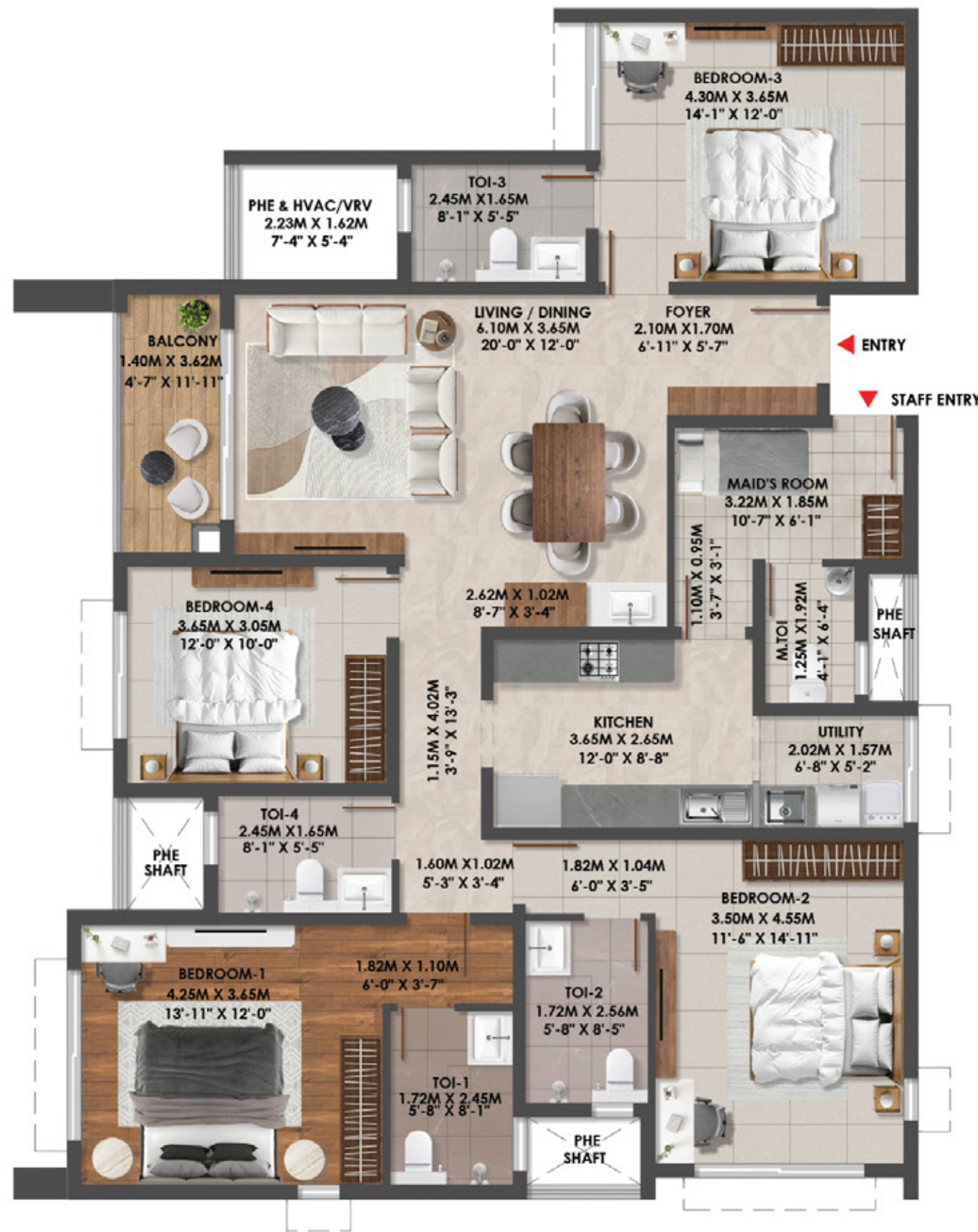


Super Built-up Area	2109 sq.ft.
Unit Carpet Area	1267 sq.ft.
Balcony + VRV Platform	88 sq.ft.

The information depicted herein viz., master plans, floor plans, furniture layout, fittings, illustrations, specifications, designs, dimensions, rendered views, colours, amenities and facilities, etc., are subject to change without notifications as may be required by the relevant authorities or the Developer's architect, and cannot form part of an offer or contract. Whilst every care is taken in providing this information, the Developer cannot be held liable for variations. All illustrations and pictures are artist's impression only. The information is subject to variations, additions, deletions, substitutions and modifications as may be recommended by the company's architect and/or the relevant approving authorities. The Developer is wholly exempt from any liability on account of any claim in this regard. (1 square metre = 10.764 square feet). E & OE. All dimensions and calculations are done in metric system (M/Sq.m), and imperial system (Ft/Sq.ft) shown is for reference only. All dimensions indicated in the drawing are from unfinished surfaces, excluding plaster thickness and tile thickness.

UNIT PLAN - 13

4 BHK + 4 TOILETS + MAID'S ROOM

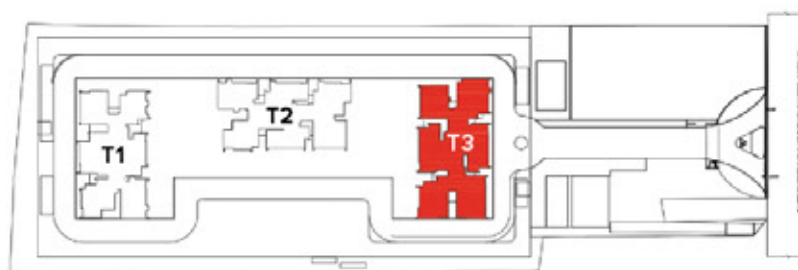


UNIT PLAN - 13

4 BHK + 4 TOILETS + MAID'S ROOM + OPEN TERRACE



Key Plan



Block Plan



Super Built-up Area	2545 sq.ft.
Unit Carpet Area	1559 sq.ft.
Balcony + VRV Platform	88 sq.ft.

The information depicted herein viz., master plans, floor plans, furniture layout, fittings, illustrations, specifications, designs, dimensions, rendered views, colours, amenities and facilities, etc., are subject to change without notifications as may be required by the relevant authorities or the Developer's architect, and cannot form part of an offer or contract. Whilst every care is taken in providing this information, the Developer cannot be held liable for variations. All illustrations and pictures are artist's impression only. The information is subject to variations, additions, deletions, substitutions and modifications as may be recommended by the company's architect and/or the relevant approving authorities. The Developer is wholly exempt from any liability on account of any claim in this regard. (1 square metre = 10.764 square feet). E & OE. All dimensions and calculations are done in metric system (M/Sq.m), and imperial system (FuSq.ft) shown is for reference only. All dimensions indicated in the drawing are from unfinished surfaces, excluding plaster thickness and tile thickness.

Key Plan



Block Plan

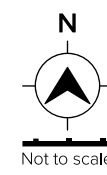


Super Built-up Area	2545 sq.ft.
Unit Carpet Area	1589 sq.ft.
Balcony + VRV Platform	88 sq.ft.
Private Open Terrace Carpet Area	1278 sq.ft.

The information depicted herein viz., master plans, floor plans, furniture layout, fittings, illustrations, specifications, designs, dimensions, rendered views, colours, amenities and facilities, etc., are subject to change without notifications as may be required by the relevant authorities or the Developer's architect, and cannot form part of an offer or contract. Whilst every care is taken in providing this information, the Developer cannot be held liable for variations. All illustrations and pictures are artist's impression only. The information is subject to variations, additions, deletions, substitutions and modifications as may be recommended by the company's architect and/or the relevant approving authorities. The Developer is wholly exempt from any liability on account of any claim in this regard. (1 square metre = 10.764 square feet). E & OE. All dimensions and calculations are done in metric system (M/Sq.m), and imperial system (FuSq.ft) shown is for reference only. All dimensions indicated in the drawing are from unfinished surfaces, excluding plaster thickness and tile thickness.

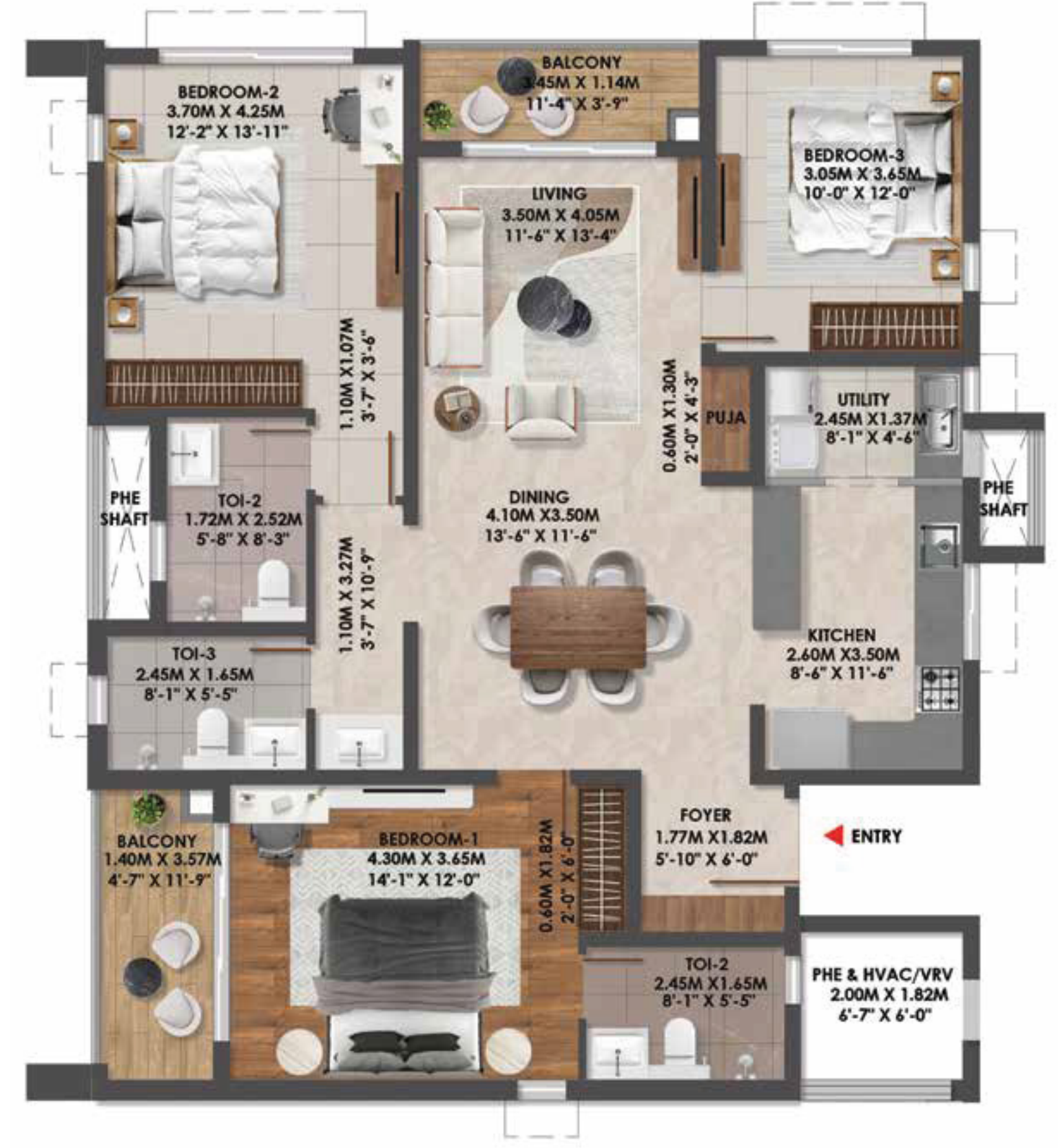
UNIT PLAN - 14

3 BHK + 3 TOILETS + STUDY

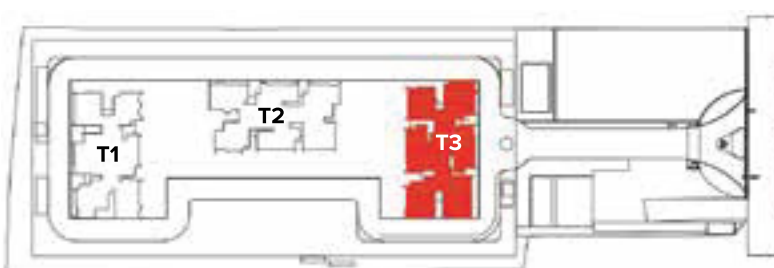


UNIT PLAN - 15

3 BHK + 3 TOILETS



Key Plan



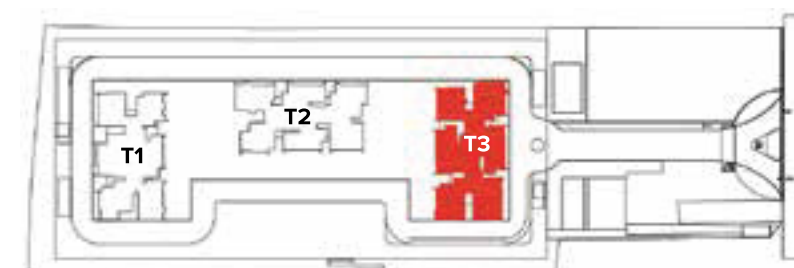
Block Plan



Super Built-up Area	2184 sq.ft.
Unit Carpet Area	1310 sq.ft.
Balcony + VRV Platform	98 sq.ft.

The information depicted herein viz., master plans, floor plans, furniture layout, fittings, illustrations, specifications, designs, dimensions, rendered views, colours, amenities and facilities, etc., are subject to change without notifications as may be required by the relevant authorities or the Developer's architect, and cannot form part of an offer or contract. Whilst every care is taken in providing this information, the Developer cannot be held liable for variations. All illustrations and pictures are artist's impression only. The information is subject to variations, additions, deletions, substitutions and modifications as may be recommended by the company's architect and/or the relevant approving authorities. The Developer is wholly exempt from any liability on account of any claim in this regard. (1 square metre = 10.764 square feet). E & OE. All dimensions and calculations are done in metric system (M/Sq.m), and imperial system (Ft/Sq.ft) shown is for reference only. All dimensions indicated in the drawing are from unfinished surfaces, excluding plaster thickness and tile thickness.

Key Plan



Block Plan

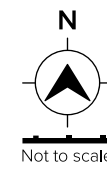


Super Built-up Area	2086 sq.ft.
Unit Carpet Area	1206 sq.ft.
Balcony + VRV Platform	132 sq.ft.

The information depicted herein viz., master plans, floor plans, furniture layout, fittings, illustrations, specifications, designs, dimensions, rendered views, colours, amenities and facilities, etc., are subject to change without notifications as may be required by the relevant authorities or the Developer's architect, and cannot form part of an offer or contract. Whilst every care is taken in providing this information, the Developer cannot be held liable for variations. All illustrations and pictures are artist's impression only. The information is subject to variations, additions, deletions, substitutions and modifications as may be recommended by the company's architect and/or the relevant approving authorities. The Developer is wholly exempt from any liability on account of any claim in this regard. (1 square metre = 10.764 square feet). E & OE. All dimensions and calculations are done in metric system (M/Sq.m), and imperial system (Ft/Sq.ft) shown is for reference only. All dimensions indicated in the drawing are from unfinished surfaces, excluding plaster thickness and tile thickness.

UNIT PLAN - 16

3 BHK + 3 TOILETS + STUDY + MAID'S ROOM



UNIT PLAN - 16

4 BHK + 4 TOILETS + STUDY + MAID'S ROOM + FAMILY

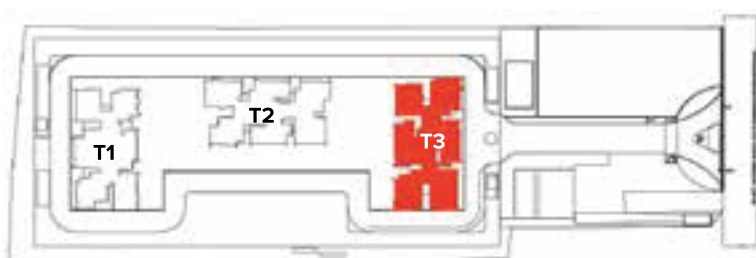


DUPLEX LEVEL 1



DUPLEX LEVEL 2

Key Plan



Block Plan



Super Built-up Area	2630 sq.ft.
Unit Carpet Area	1589 sq.ft.
Balcony + VRV Platform	119 sq.ft.

The information depicted herein viz., master plans, floor plans, furniture layout, fittings, illustrations, specifications, designs, dimensions, rendered views, colours, amenities and facilities, etc., are subject to change without notifications as may be required by the relevant authorities or the Developer's architect, and cannot form part of an offer or contract. Whilst every care is taken in providing this information, the Developer cannot be held liable for variations. All illustrations and pictures are artist's impression only. The information is subject to variations, additions, deletions, substitutions and modifications as may be recommended by the company's architect and/or the relevant approving authorities. The Developer is wholly exempt from any liability on account of any claim in this regard. (1 square metre = 10.764 square feet). E & OE. All dimensions and calculations are done in metric system (M/Sq.m), and imperial system (Ft/Sq.ft) shown is for reference only. All dimensions indicated in the drawing are from unfinished surfaces, excluding plaster thickness and tile thickness.

Key Plan



Block Plan

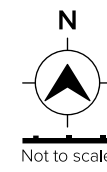


Super Built-up Area	5054 sq.ft.
Unit Carpet Area	3027 sq.ft.
Balcony + VRV Platform	238 sq.ft.

The information depicted herein viz., master plans, floor plans, furniture layout, fittings, illustrations, specifications, designs, dimensions, rendered views, colours, amenities and facilities, etc., are subject to change without notifications as may be required by the relevant authorities or the Developer's architect, and cannot form part of an offer or contract. Whilst every care is taken in providing this information, the Developer cannot be held liable for variations. All illustrations and pictures are artist's impression only. The information is subject to variations, additions, deletions, substitutions and modifications as may be recommended by the company's architect and/or the relevant approving authorities. The Developer is wholly exempt from any liability on account of any claim in this regard. (1 square metre = 10.764 square feet). E & OE. All dimensions and calculations are done in metric system (M/Sq.m), and imperial system (Ft/Sq.ft) shown is for reference only. All dimensions indicated in the drawing are from unfinished surfaces, excluding plaster thickness and tile thickness.

UNIT PLAN - 17

3 BHK + 3 TOILETS + STUDY



UNIT PLAN - 17

DUPLEX - 4 BHK + 4 TOILETS + STUDY + POWDER ROOM + FAMILY

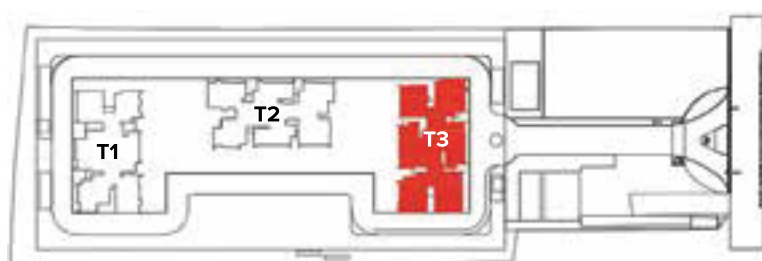


DUPLEX LEVEL 1



DUPLEX LEVEL 2

Key Plan



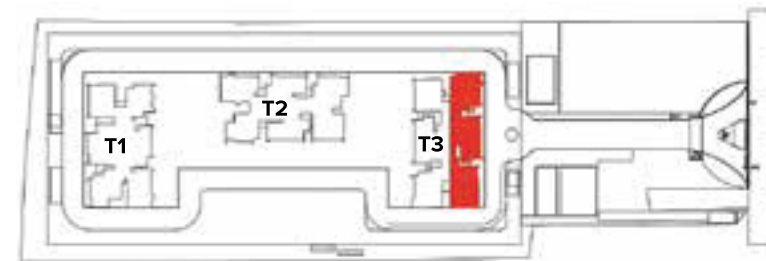
Block Plan



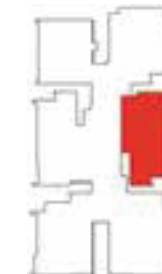
Super Built-up Area	2208 sq.ft.
Unit Carpet Area	1347 sq.ft.
Balcony + VRV Platform	78 sq.ft.

The information depicted herein viz., master plans, floor plans, furniture layout, fittings, illustrations, specifications, designs, dimensions, rendered views, colours, amenities and facilities, etc., are subject to change without notifications as may be required by the relevant authorities or the Developer's architect, and cannot form part of an offer or contract. Whilst every care is taken in providing this information, the Developer cannot be held liable for variations. All illustrations and pictures are artist's impression only. The information is subject to variations, additions, deletions, substitutions and modifications as may be recommended by the company's architect and/or the relevant approving authorities. The Developer is wholly exempt from any liability on account of any claim in this regard. (1 square metre = 10.764 square feet). E & OE. All dimensions and calculations are done in metric system (M/Sq.m), and imperial system (Ft/Sq.ft) shown is for reference only. All dimensions indicated in the drawing are from unfinished surfaces, excluding plaster thickness and tile thickness.

Key Plan



Block Plan

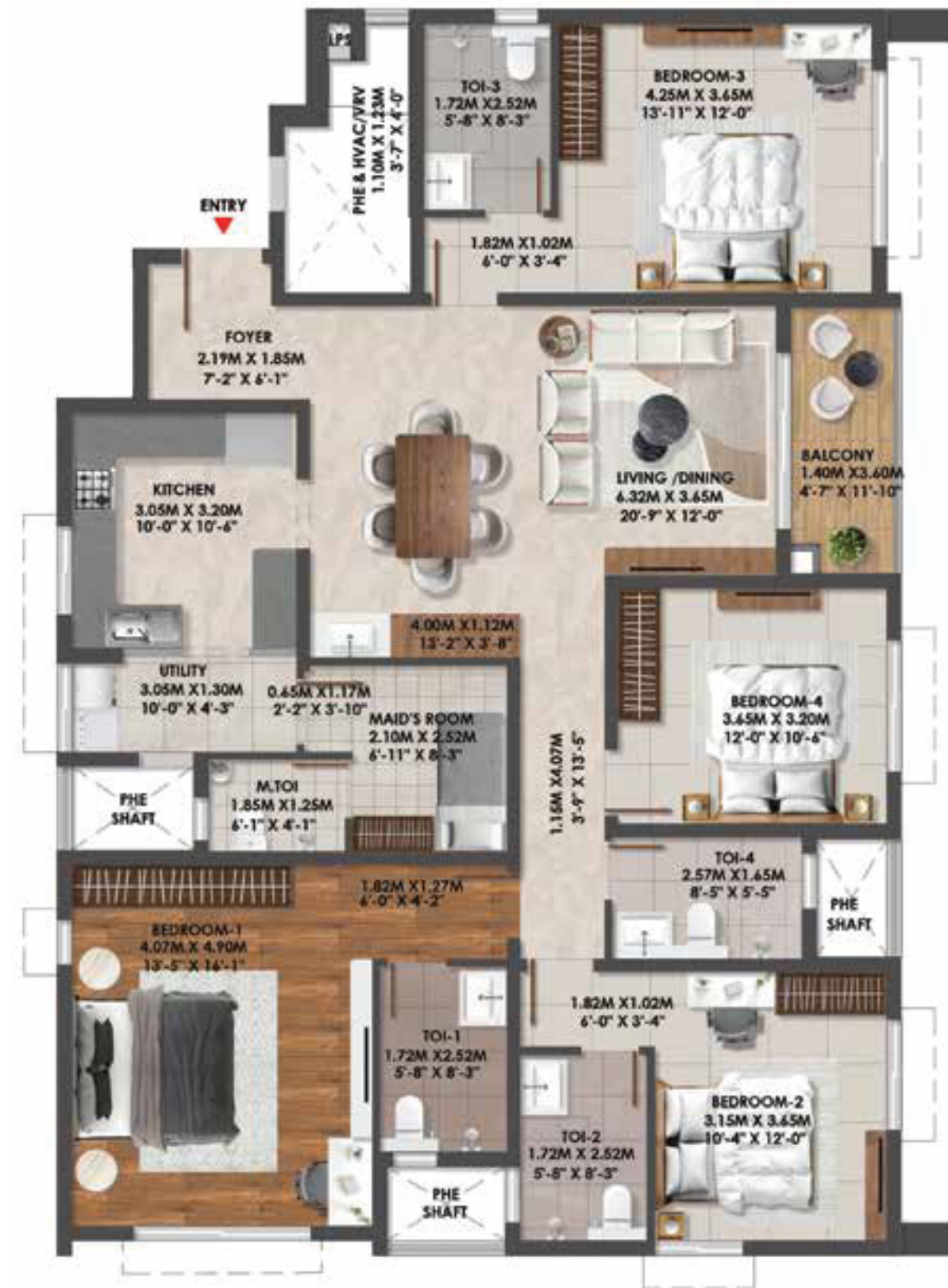
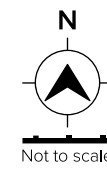


Super Built-up Area	4064 sq.ft.
Unit Carpet Area	2415 sq.ft.
Balcony + VRV Platform	157 sq.ft.

The information depicted herein viz., master plans, floor plans, furniture layout, fittings, illustrations, specifications, designs, dimensions, rendered views, colours, amenities and facilities, etc., are subject to change without notifications as may be required by the relevant authorities or the Developer's architect, and cannot form part of an offer or contract. Whilst every care is taken in providing this information, the Developer cannot be held liable for variations. All illustrations and pictures are artist's impression only. The information is subject to variations, additions, deletions, substitutions and modifications as may be recommended by the company's architect and/or the relevant approving authorities. The Developer is wholly exempt from any liability on account of any claim in this regard. (1 square metre = 10.764 square feet). E & OE. All dimensions and calculations are done in metric system (M/Sq.m), and imperial system (Ft/Sq.ft) shown is for reference only. All dimensions indicated in the drawing are from unfinished surfaces, excluding plaster thickness and tile thickness.

UNIT PLAN - 18

4 BHK + 4 TOILETS + MAID'S ROOM



UNIT PLAN - 18

DUPLEX - 4 BHK + 5 TOILETS + MAID'S ROOM + FAMILY

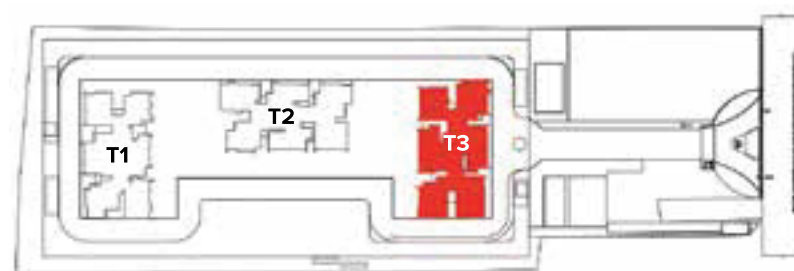


DUPLEX LEVEL 1



DUPLEX LEVEL 2

Key Plan



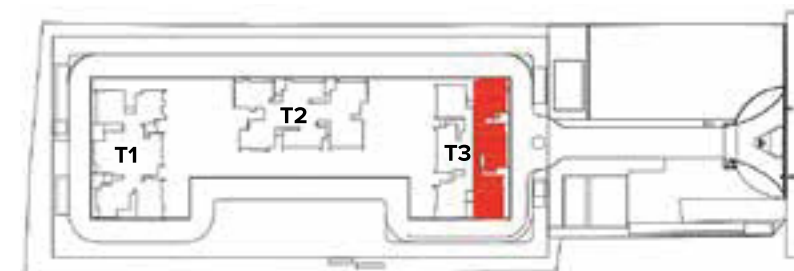
Block Plan



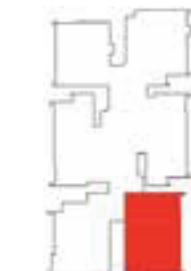
Super Built-up Area	2577 sq.ft.
Unit Carpet Area	1598 sq.ft.
Balcony + VRV Platform	78 sq.ft.

The information depicted herein viz., master plans, floor plans, furniture layout, fittings, illustrations, specifications, designs, dimensions, rendered views, colours, amenities and facilities, etc., are subject to change without notifications as may be required by the relevant authorities or the Developer's architect, and cannot form part of an offer or contract. Whilst every care is taken in providing this information, the Developer cannot be held liable for variations. All illustrations and pictures are artist's impression only. The information is subject to variations, additions, deletions, substitutions and modifications as may be recommended by the company's architect and/or the relevant approving authorities. The Developer is wholly exempt from any liability on account of any claim in this regard. (1 square metre = 10.764 square feet). E & OE. All dimensions and calculations are done in metric system (M/Sq.m), and imperial system (Ft/Sq.ft) shown is for reference only. All dimensions indicated in the drawing are from unfinished surfaces, excluding plaster thickness and tile thickness.

Key Plan



Block Plan



Super Built-up Area	4404 sq.ft.
Unit Carpet Area	2654 sq.ft.
Balcony + VRV Platform	210 sq.ft.

The information depicted herein viz., master plans, floor plans, furniture layout, fittings, illustrations, specifications, designs, dimensions, rendered views, colours, amenities and facilities, etc., are subject to change without notifications as may be required by the relevant authorities or the Developer's architect, and cannot form part of an offer or contract. Whilst every care is taken in providing this information, the Developer cannot be held liable for variations. All illustrations and pictures are artist's impression only. The information is subject to variations, additions, deletions, substitutions and modifications as may be recommended by the company's architect and/or the relevant approving authorities. The Developer is wholly exempt from any liability on account of any claim in this regard. (1 square metre = 10.764 square feet). E & OE. All dimensions and calculations are done in metric system (M/Sq.m), and imperial system (Ft/Sq.ft) shown is for reference only. All dimensions indicated in the drawing are from unfinished surfaces, excluding plaster thickness and tile thickness.

SPECIFICATIONS

COMMON AREA

Waiting Lounge/Reception/GF Lobby:
Granite/Vitrified Tiles Flooring

Lift Lobby and Corridors: Vitrified Tiles

UNITS

Living/Dining/Family/Foyer/Kitchen: Engineered Marble

Master Bedroom: Wood Finish Vitrified Tiles
(200m x 1200mm)

Other Bedrooms: Vitrified Tiles large size (800mm x 800mm)

Balcony/Deck: Anti-skid Ceramic Tiles/
Wooden Finish Vitrified Tiles

Master Bedroom/Other Toilets: Vitrified Tiles (600mm x
600mm)

Kitchen: Engineered Marble

Servants Room and Toilet: Ceramic Tiles

WALL DADO

Kitchen: Provision for Modular Kitchen
(no Granite Slab/no Dado will be provided)

Other Toilets: Vitrified Tiles (600mm x 600mm) cladding
up to false ceiling

KITCHEN UTILITY

Counter: Provision for Modular Kitchen
(no Counter will be provided)

Sink in the utility area

Plumbing/Electrical: Provision for Water Purifier/Sink,
Washing Machine and Dishwasher

TOILETS

Master Bedroom Toilet: Glass shower partition

CP Fittings: Kohler/Grohe/Toto or equivalent

Sanitary Fixtures - EWC & Washbasin: All mounted white
EWC (Kohler/ Duravit/Toto or equivalent)

DOORS

Main Entry Door: Teakwood Frame with
Veneer Flush Shutters

Main Door Frame: Digital Lock

Main Door Frame: Hardwood Frame with
Veneer Flush Shutter

Bedroom Door Frame: Hardwood Frame with
Veneer Flush Shutter

Toilet Door Frame: Hardwood Frame with
Laminate Flush Shutter

WINDOWS AND VENTILATORS

UPVC./Anodised Aluminium with bug screen and
Safety Grill/Invisible Grill for windows only

PAINTING & FINISHES

Exterior Finish: Combination of Exterior Texture
Paint with Exterior Grade Emulsion

Internal Ceilings: Oil Bound Distemper

Unit Walls: Acrylic Emulsion Paint

AIR CONDITIONING

Living: VRV-Ductable Splits

Master Bedroom: VRV-Ductable Splits

Other Bedrooms: VRV-Ductable Splits

ELECTRICAL

4BHK/Duplex (4BHK) & above: 9.5 Kw

3 BHK+3T/3BHK+2T/3BHK+Study/
3BHK+Maid's Room: 8.3 Kw

Modular Switches: Anchor Roma Plus/
Panasonic Vision or equivalent

DG BACKUP

100% DG backup for common area and units

VERTICAL TRANSPORTATION

Lifts provided as per design





Image is indicative & for representation purpose only.



Deepening our
**Sustainability
Commitment.**

At Brigade Group, our core philosophy centers around shaping a radiant future with responsibility and care.

Every project we embark on, is infused with deep reverence for our invaluable natural resources, and each initiative resonates outward to foster positive societal transformation. We don't merely design buildings; we architect a thriving tomorrow.

Brigade's journey towards a 'Net Zero Carbon Footprint by 2045' began with a comprehensive assessment of our carbon emissions. We are implementing extensive de-carbonisation strategies, such as reducing energy consumption and transitioning to clean energy, which not only mitigates climate change but also creates numerous opportunities for sustainable growth. We are committed to preserving and enhancing bio-diversity through green building designs, urban greening projects, and conservation efforts that protect the local ecosystem.

To know more about our sustainability milestones and goals, visit BrigadeGroup.com

MULTIPLE DOMAINS. SINGLE-MINDED COMMITMENT.



The Brigade Group is one of India's leading property developers with over three decades of expertise in building positive experiences for all stakeholders. Instituted in 1986, the company has developed many landmark buildings and transformed the skyline of cities across South India, namely – Bengaluru, Mysuru, Mangaluru, Chikmagalur, Hyderabad, Chennai, Kochi, and GIFT City, Gandhinagar with developments across the Residential, Commercial, Retail, Hospitality, and Education sectors. Since its inception, Brigade has completed 280+ buildings amounting to over 90 million sq.ft. (8.36 million sq.mt.) of developed space across a diverse real estate portfolio.

Brigade assures best-in-class design and top-of-the-line facilities that exude elegance and sophistication. The Residential developments include villas, villaments, penthouses, premium residences, luxury apartments, value homes, urban studios, independent living for seniors and mixed-use lifestyle enclaves, plotted developments, and townships. Over the years, the projects have been one-of-a-kind in the sector, for example, Brigade developed Brigade Gateway, Bengaluru's first lifestyle enclave and Brigade Exotica, one of the tallest residential buildings in Bengaluru.

Brigade is among the few developers that also enjoy a reputation for developing Grade A Commercial properties. The license owners of the World Trade Center across South India, the Group's commercial spaces have top international clients operating out of them. Brigade also entered the co-working space with 'BuzzWorks' in March 2019. The commercial segment has seen consistent growth over the last few years with over 5 million sq.ft. of office spaces under development.

Brigade Retail's first venture was the iconic, world-class Orion Mall at Brigade Gateway, subsequently expanding with Orion Avenue and Orion Uptown. Brigade's Hospitality offerings include star hotels, recreational clubs, convention centres, and The Baking Company, a unique patisserie.

Brigade is the founder of The Indian Music Experience (IME) – a monumental and philanthropic initiative that is India's only hi-tech interactive music museum. It was conceived to give back to society and sensitise the present generation to the rich culture of Indian music. The Group contributes in numerous ways towards community development, health, education, and the environment. Through the Brigade Foundation, the brand has successfully opened three schools in its name, offering holistic education; has conducted large-scale tree plantation drives; spruced up parts of the city; revived public recreational spots like lakes and parks, to name a few.

Brigade Real Estate Accelerator Program (REAP), Asia's first startup accelerator program, is a prelude to the changing trends in the real estate industry, which is standing on the cusp of disruption. REAP brings along innovators and inventors to use technology as a catalyst for creating sustainable and scalable businesses in the real estate industry. 'Great Place to Work Institute' has rated the Brigade Group as one of India's best companies to work for in the real estate industry. This responsible attitude and innovative mindset combined with the uncompromising quality of the projects over the years has created a brand of outstanding repute.

For more information, please visit www.brigadegroup.com

Brigade Group

Recognised as one of 'India's Top Builders' at the CWAB Awards 2024.

Brigade Group

Recognised as Great Place to Work Institute 2024. Ranked as the Best in the Real Estate Industry and amongst the 100 Best Places to Work in India for 14 Consecutive Years.

Brigade Cornerstone Utopia - East Bengaluru

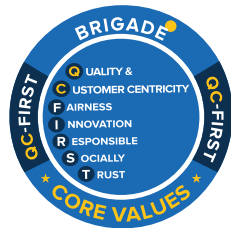
Won 'Residential Project of the Year' at the GRI Awards India 2024.

Corporate Social Responsibility

Won CREDAI Karnataka Care Awards 2023 for the Best CSR Activity.



Our core values



Founders



To **UPGRADE TO BRIGADE**, reach us on **1800 102 9977** • **BrigadeAltius.com**

Site Marketing Office
Brigade Altius
No. 295,
Rajiv Gandhi Salai (OMR)
Sholinganallur, Chennai - 600119

Registered & Corporate Office
29th & 30th Floor, WTC Bangalore,
Brigade Gateway Campus,
Dr. Rajkumar Road,
Malleswaram-Rajajinagar, Bengaluru

Dubai Office
902. Nassima Tower,
Sheikh Zayed Rd.
Ph: +971 4355 5504
dubaisales@brigadegroup.com

Singapore Office
Suite: 612, Level 6,
Republic Plaza,
Raffles Place
salesenquiry@brigadegroup.com

Offices also at: **BENGALURU** • **HYDERABAD** • **MYSURU**